

Watch Movement Specification and Drawing

CALENDAR

Cal. AX32A

Movement Size

10 1/2'''

Casing Diameter

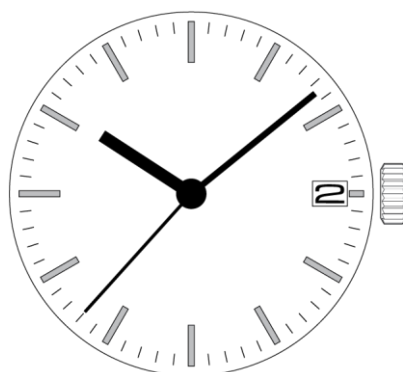
Ø 23.3mm

Height

4.15mm

Battery Life

3 years

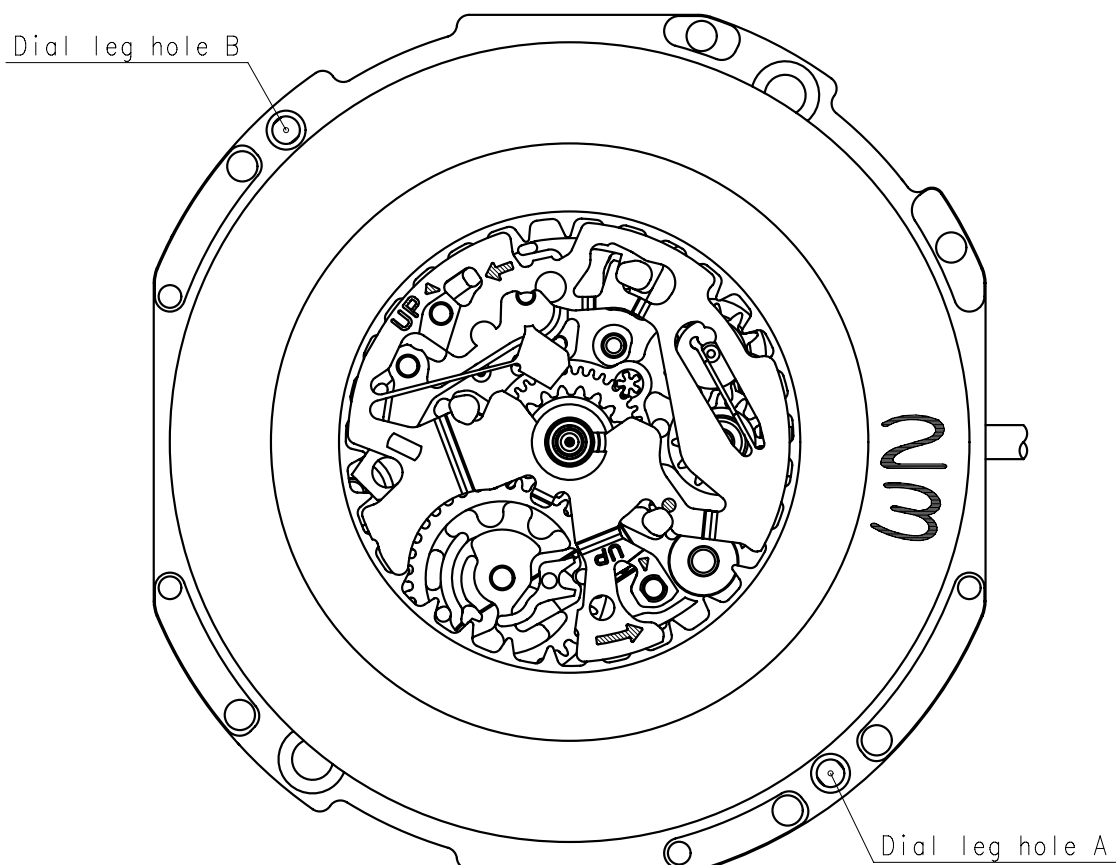
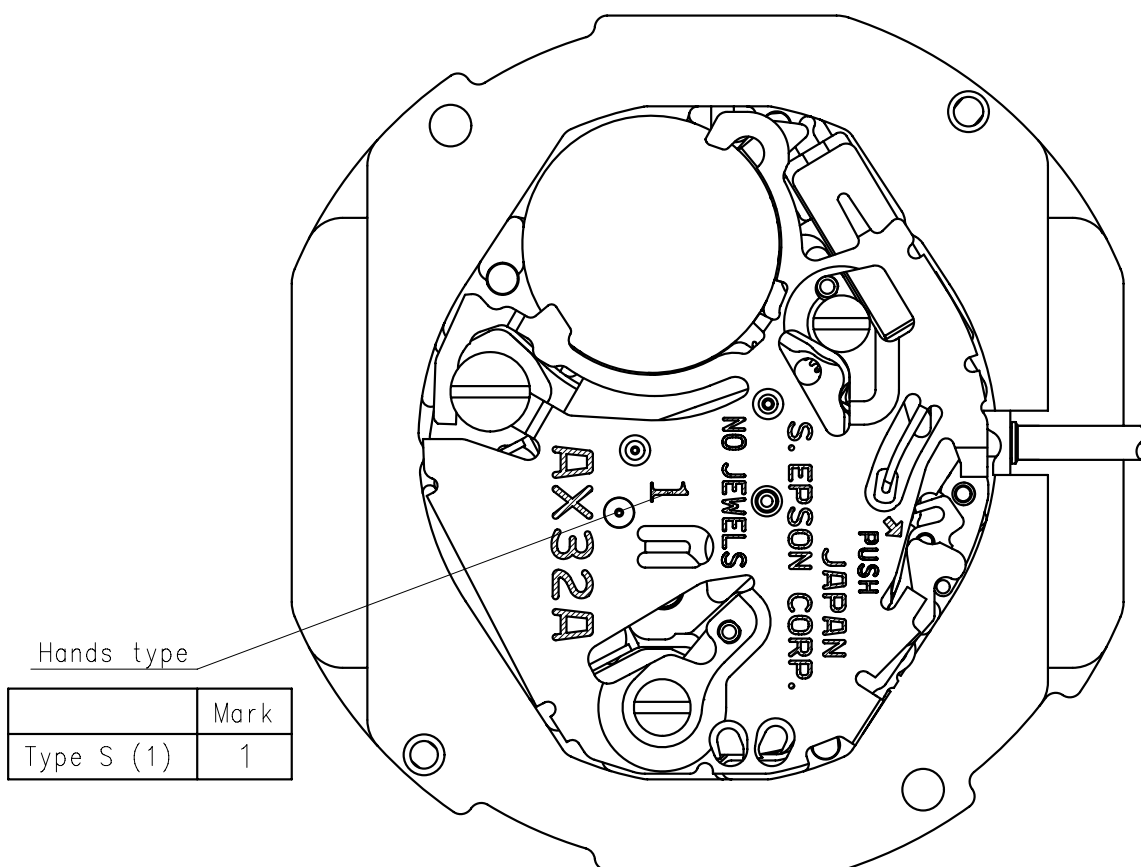


Date: 10/Jun./'21

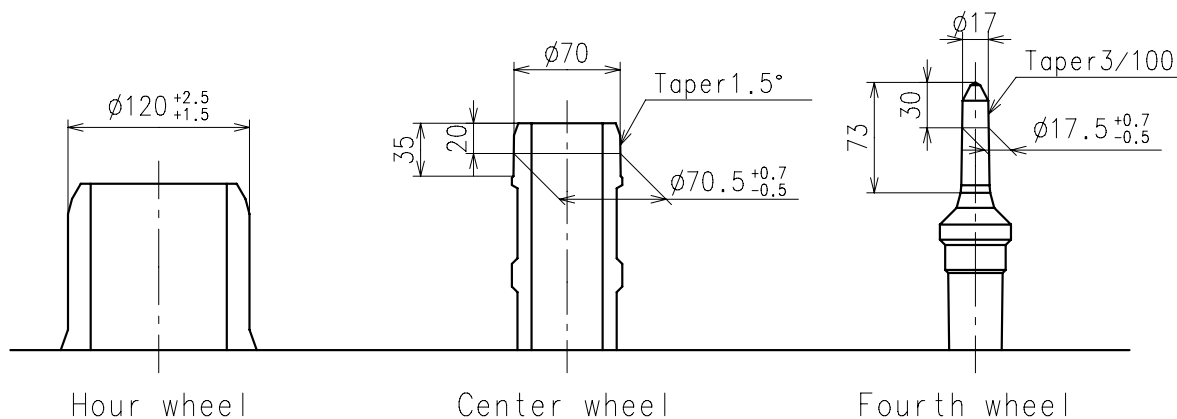
Cal. AX32A

Items	Rev.	Page
Specifications	00	1
Appearance	00	2
Casing	00	3
Hand fitting	00	4
Hand setting stem	00	5
Dial-01	00	6-01
Dial-02	00	6-02
Casing ring	00	7

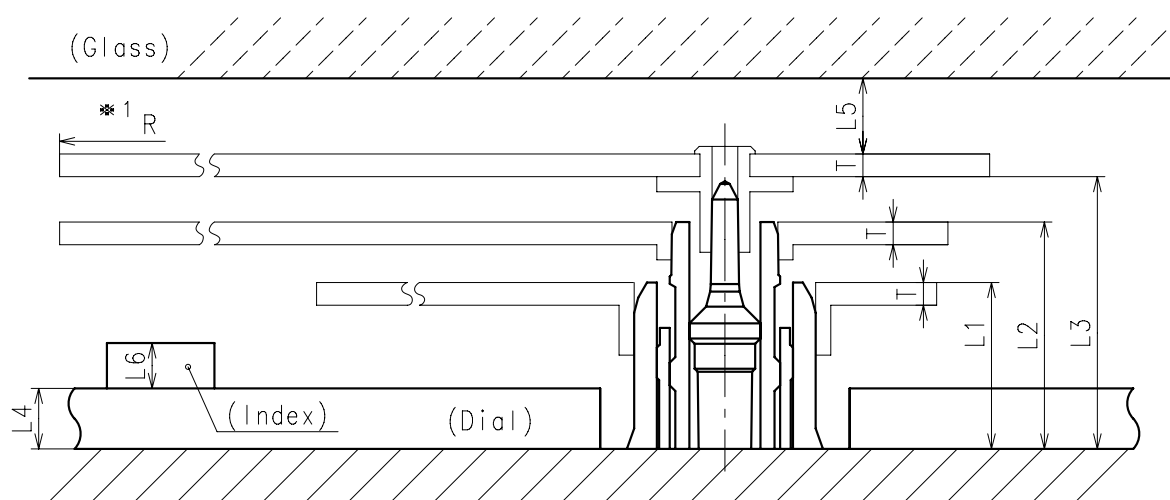
Cal.	AX32A	Date : 10/Jun./'21
	Specifications	Rev. : 00
Analog Quartz 10 1/2" Calendar Series Movement / Three Hands(H/M/S) with Calendar		
1. MOVEMENT DIMENSIONS <div> <div>Outside diameter</div> <div>ϕ 23.70mm × 22.00mm(3-9H) × 22.60mm(12-6H)</div> </div> <div> <div>Casing diameter</div> <div>ϕ 23.00mm</div> </div> <div> <div>Total height</div> <div>4.15mm (including battery)</div> </div>		
2. TIME STANDARD <div> <div>Type of quartz oscillator</div> <div>Tuning fork</div> </div> <div> <div>Frequency of quartz oscillator</div> <div>32,768 Hz</div> </div> <div> <div>Accuracy</div> <div>±20 seconds per month (on wrist)</div> </div> <div> <div>Operating temperature range</div> <div>−5°C to +50°C</div> </div> <div> <div>Regulation device</div> <div>Nil (Pre-adjusted)</div> </div>		
3. INDICATOR / FUNCTIONS <div> <div>3 Hands</div> <div>Hour / Minute / Second</div> </div> <div> <div>Calendar</div> <div>Instant setting device for date calendar</div> </div> <div> <div>Reset switch</div> <div></div> </div> <div> <div>Setting mechanism</div> <div> <div>Crown at normal position : Free</div> <div>Crown pulled out 1st click : Instant date change</div> <div>Crown pulled out 2nd click : Time setting / Reset</div> </div> </div>		
4. FEATURES <div> <div>Jewels</div> <div>0 Jewels</div> </div> <div> <div>Anti-magnetism</div> <div>Over 1600A/m (Direct current magnetic field)</div> </div> <div> <div>Maximum unbalance of hands</div> <div> <div>Second hand : 0.08 μ N·m</div> <div>Minute hand : 0.6 μ N·m</div> <div>Hour hand : 0.5 μ N·m</div> </div> </div>		
5. BATTERY <div> <div>Type / Size</div> <div>Silver oxide battery / ϕ 6.8mm × t 2.6mm</div> </div> <div> <div>Recommended battery</div> <div>SR626SW(Maxell, Murata)</div> </div> <div> <div>Nominal voltage</div> <div>1.55 V</div> </div> <div> <div>Battery life</div> <div>Approx. 3 years</div> </div> <div> <div>Driving current consumption</div> <div>Approx. 1.04 μ A</div> </div> <div> <div>Operation stopping voltage</div> <div>1.1 V</div> </div>		
6. SEPARATED PARTS (Parts code) <div> <div>Hand setting stem</div> <div>0351177 or 0351578</div> </div> <div> <div>Battery</div> <div>SR626SW</div> </div>		
7. TEST OF ACCURACY <div> <div>Equipment to be used</div> <div>SEIKO quartz tester QT-99, Greiner quartz timer-C , Witschi Q-tester 4000</div> </div> <div> <div>Duration of measurement</div> <div>10 seconds</div> </div> <div> <div>Microphone to be used</div> <div>Electromagnetic detection type</div> </div>		
All specifications are subject to change without notice.		



- ※ Second hand unbalance $\leq 0.08\mu \text{ N} \cdot \text{m}$ ($8\mu \text{ g} \cdot \text{m}$)
- ※ Minute hand unbalance $\leq 0.6\mu \text{ N} \cdot \text{m}$ ($60\mu \text{ g} \cdot \text{m}$)
- ※ Hour hand unbalance $\leq 0.5\mu \text{ N} \cdot \text{m}$ ($50\mu \text{ g} \cdot \text{m}$)

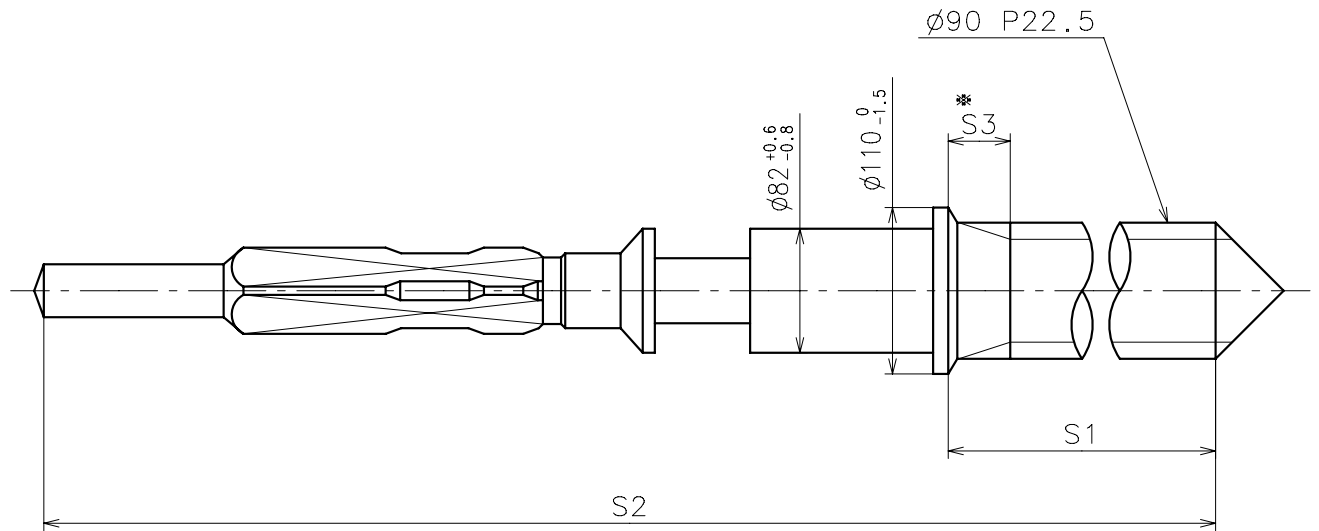


	Parts No.		
	Hour wheel	Center wheel	Fourth wheel
Type S (1) AX32A	0271517	0221565	0241527



	L1	L2	L3	L4	L5	L6	T	*1 R
Type S (1) AX32A	110	150	180	40	MIN: 50	MAX: 30	15	MAX: 1250

※ 1: It is the size taken into consideration for hands attachment.
Please observe some standard value specified in unbalance when using long hands.



※ Not threaded

	Part No.	S1	S2	※ S3
Type-1 (Standard)	0351177	1366	1964	60
Type-2	0351578	2507	3105	650

Material : Steel

Hardness : Vickers 600±50

