

Watch Movement Specification and Drawing

## MULTI - FUNCTION

# Cal. VX3WE

Movement Size

10 1/2'''

Casing Diameter

Ø 23.3mm

Height

3.05mm

Battery Life

3 years

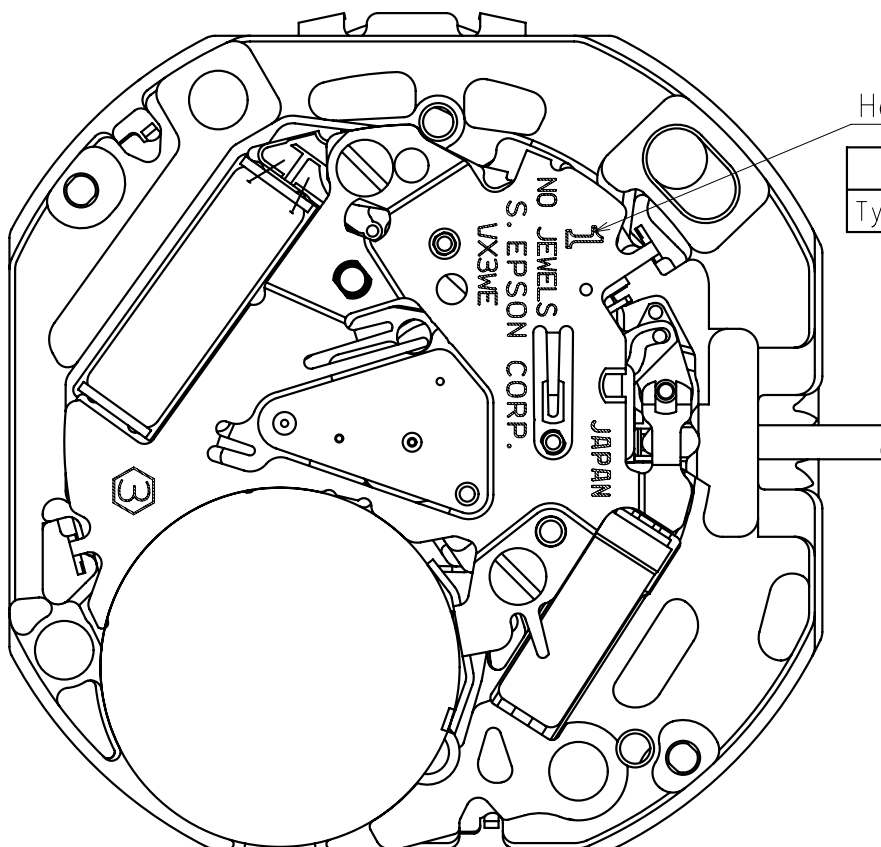


Date: 18/Sep./'20

# Cal. VX3WE

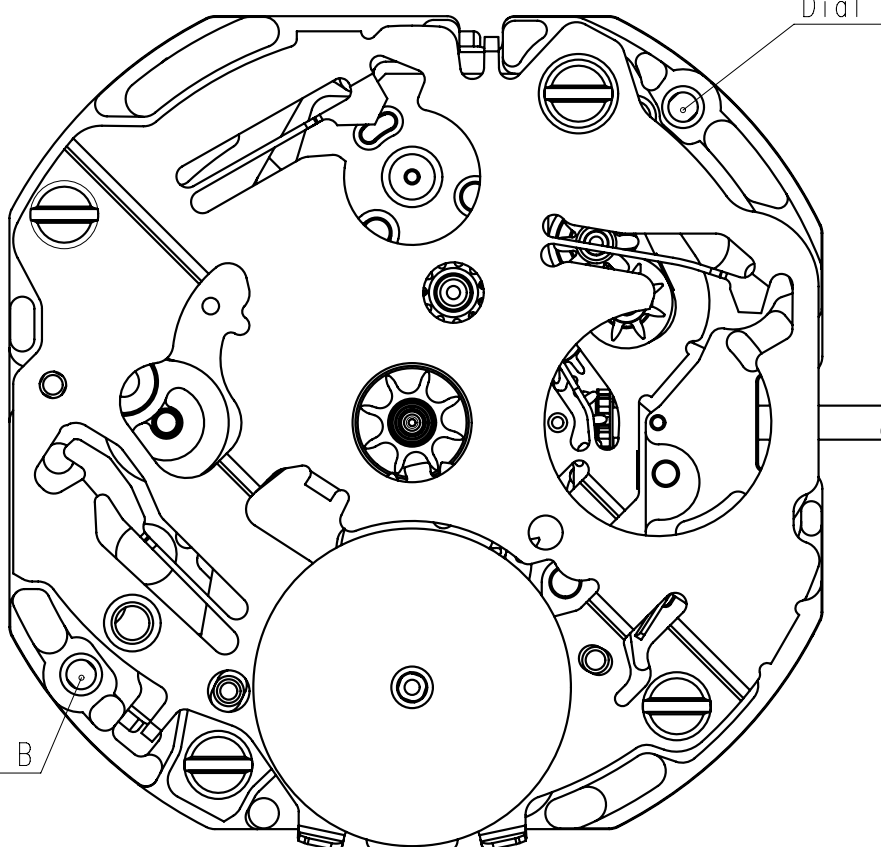
Items	Rev.	Page
Specifications	01	1
Appearance	00	2
Casing	00	3
Hand fitting	01	4
Hand setting stem	00	5
Dial	00	6
Casing ring	00	7
Operation	00	8

Cal.	VX3WE	Specifications		Date : 18/Sep./'20
				Rev. : 01
Analog Quartz 10 1/2" Slim Movement / 3 hands (H/M/S) and 1 eye with 24 Hour Rotary Disc (Sun & Moon) indicators				
1. MOVEMENT DIMENSIONS				
Outside diameter		ϕ 24.00mm × 21.50mm(3-9H) × 22.10mm(12-6H)		
Casing diameter		ϕ 23.30mm × 21.30mm(3-9H) × 21.50mm(12-6H)		
Total height		3.05mm (including battery)		
2. TIME STANDARD				
Type of quartz oscillator		Tuning fork		
Frequency of quartz oscillator		32,768 Hz		
Accuracy		±20 seconds per month (on wrist)		
Operating temperature range		−5°C to +50°C		
Regulation device		Nil (Pre-adjusted)		
3. INDICATOR / FUNCTIONS				
3 Hands		Hour / Minute / Second		
24 Hour Rotary Disc		Sun & Moon indication		
Reset switch				
Setting mechanism		Crown at normal position	: Free	
		Crown pulled out 1st click	: Time setting / Reset	
4. FEATURES				
Jewels		0 Jewels		
Anti-magnetism		Over 1600A/m (Direct current magnetic field)		
Maximum unbalance of hands		Second hand	: 0.07 μ N•m	
		Minute hand	: 0.65 μ N•m	
		Hour hand	: 0.5 μ N•m	
5. BATTERY				
Type / Size		Silver oxide battery / ϕ 9.5mm × t 2.0mm		
Recommended battery		SR920SW (Maxell, Murata, Seizaiken)		
Nominal voltage		1.55 V		
Battery life		Approx. 3 years		
Driving current consumption		Approx. 1.6 μ A		
Operation stopping voltage		1.1 V		
6. SEPARATED PARTS (Parts code)				
Hand setting stem		0351177 or 0351578		
Battery		SR920SW		
7. TEST OF ACCURACY				
Equipment to be used		SEIKO quartz tester QT-99, Greiner quartz timer-C , Witschi Q-tester 4000		
Duration of measurement		10 seconds		
Microphone to be used		Electromagnetic detection type		
All specifications are subject to change without notice.				



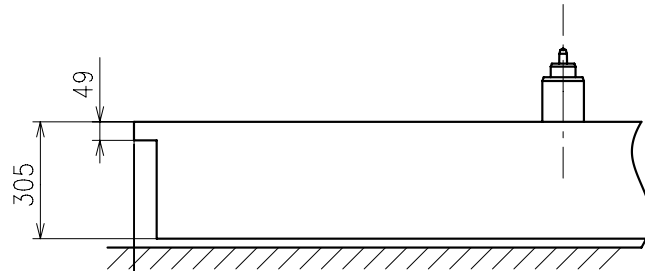
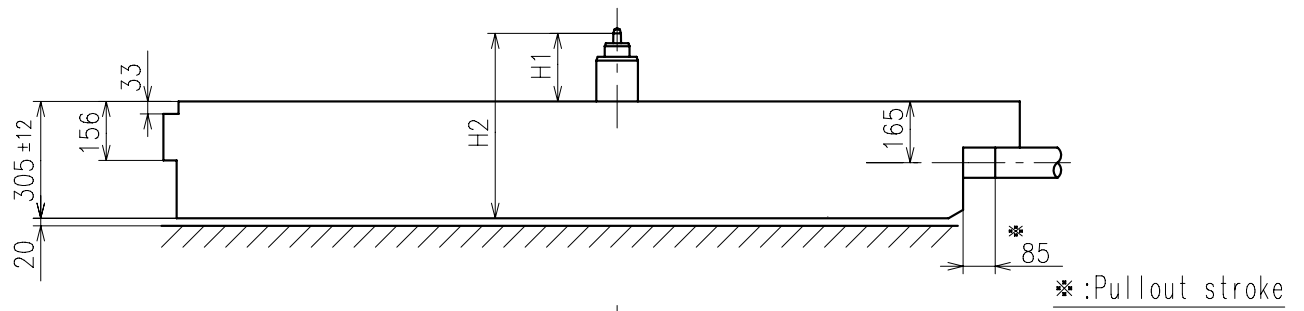
Hands type

	Mark
Type S (1)	1

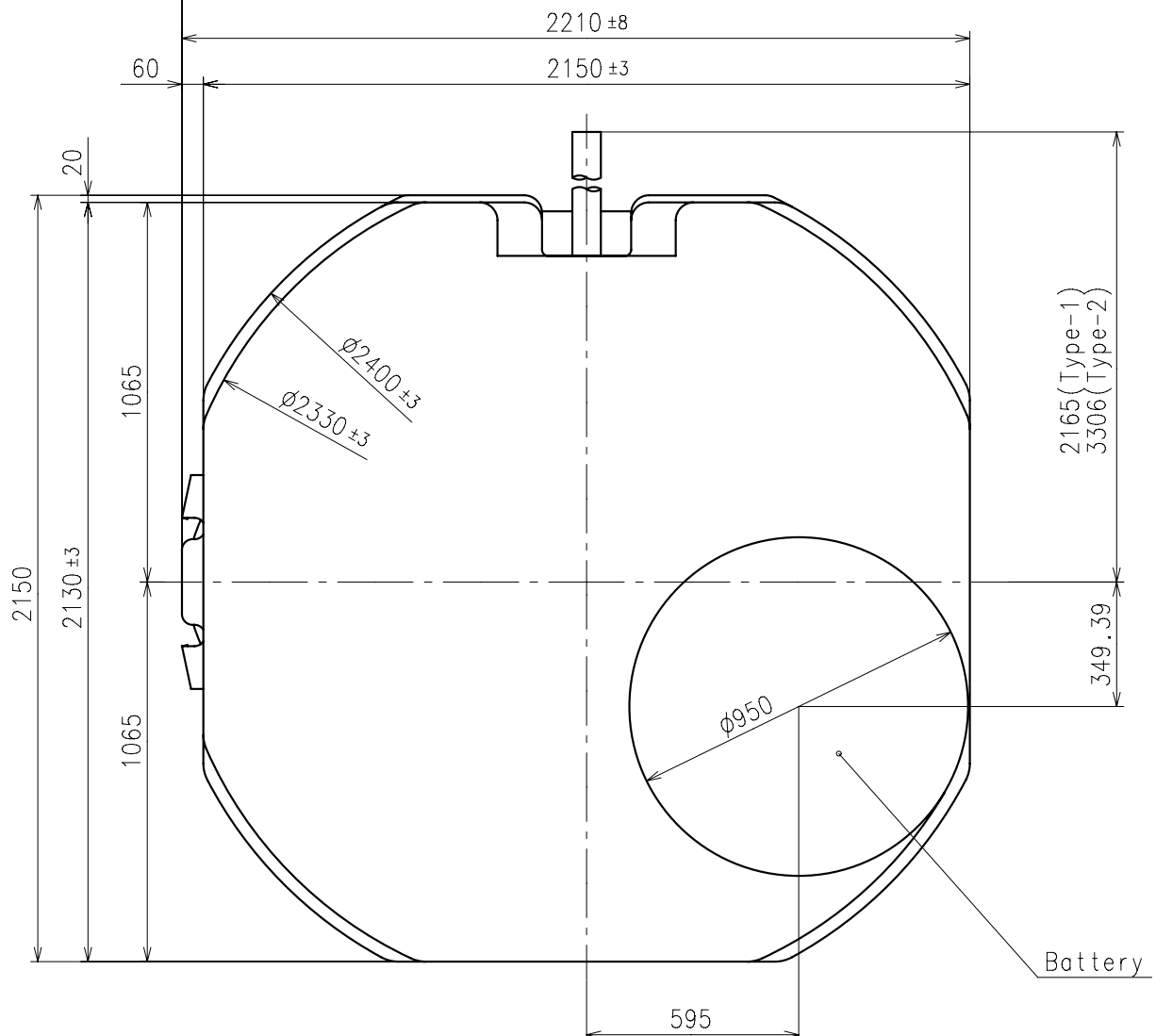


Dial leg hole A

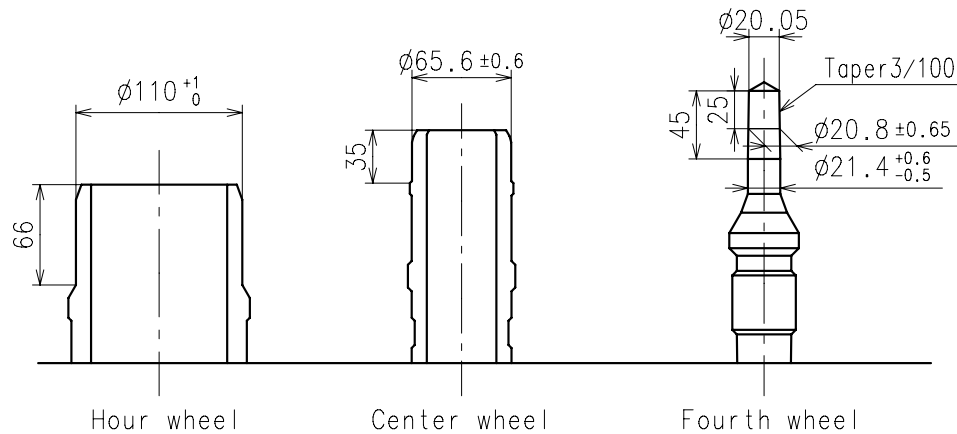
Dial leg hole B



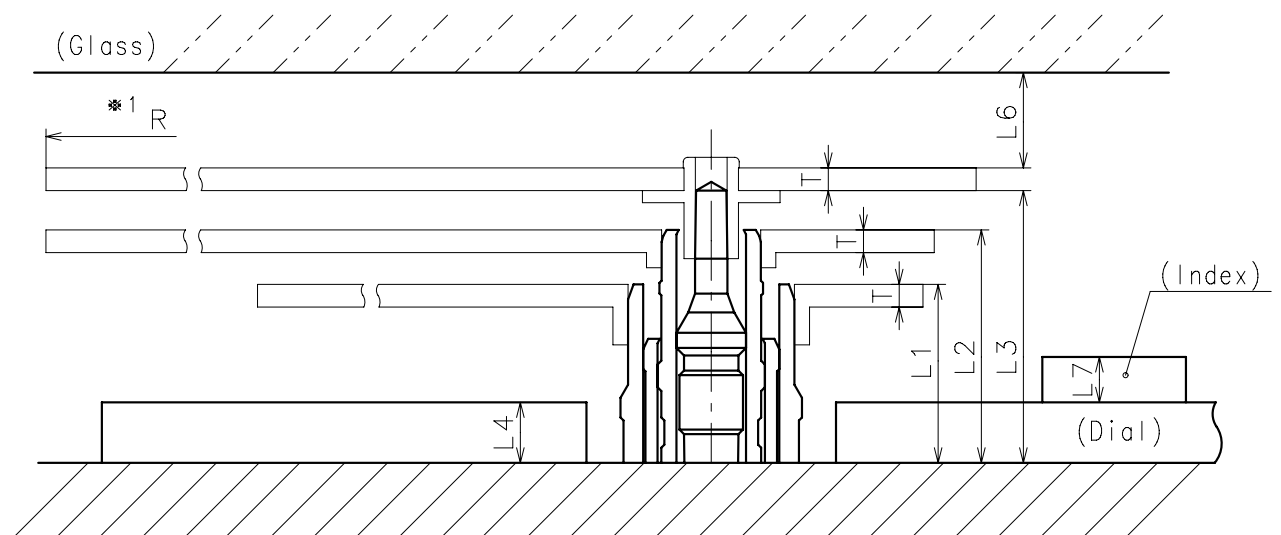
Center post		Type S (1) VX3WE1
Maximum height from dial support	H1	180
Total height including movement	H2	485



- ※ Hour hand unbalance  $\leq 0.5\mu\text{ N}\cdot\text{m}$  ( $50\mu\text{ g}\cdot\text{m}$ )
- ※ Minute hand unbalance  $\leq 0.65\mu\text{ N}\cdot\text{m}$  ( $65\mu\text{ g}\cdot\text{m}$ )
- ※ Second hand unbalance  $\leq 0.07\mu\text{ N}\cdot\text{m}$  ( $7\mu\text{ g}\cdot\text{m}$ )

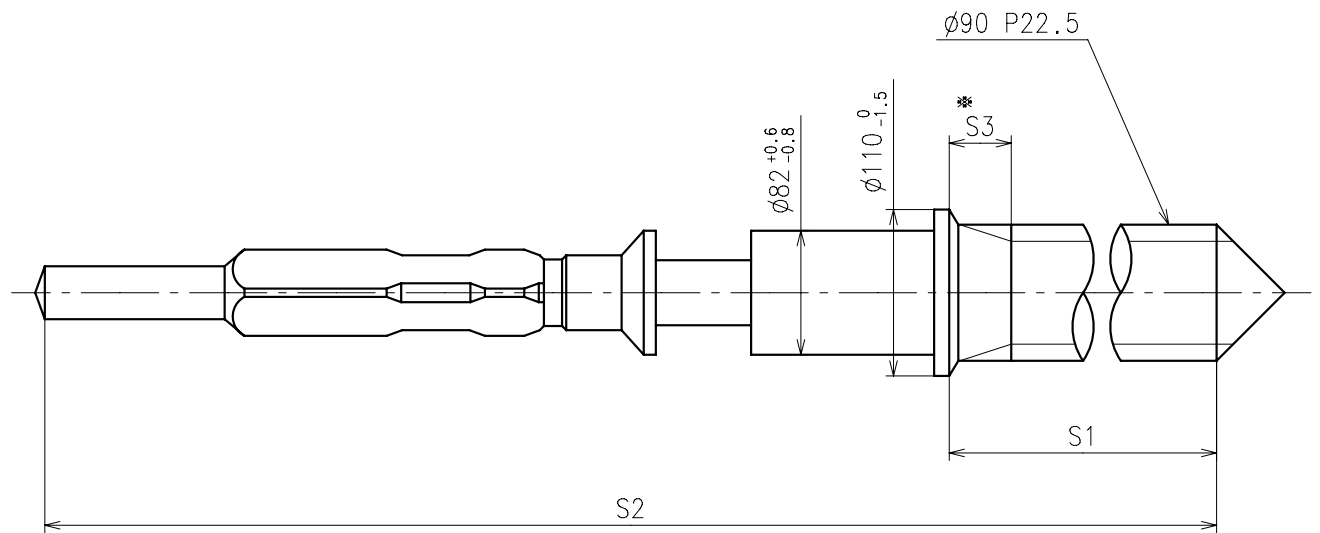


	Parts No.		
	Hour wheel	Center wheel	Fourth wheel
Type S (1) VX3WE1	0271563	0221575	0241528



	L1	L2	L3	L4		L6	L7	T	*1 R
Type S (1) VX3WE1	118	154	180	40		MIN: 50	MAX: 30	15	MAX: 1250

※ 1: It is the size taken into consideration for hands attachment.  
Please observe some standard value specified in unbalance when using long hands.

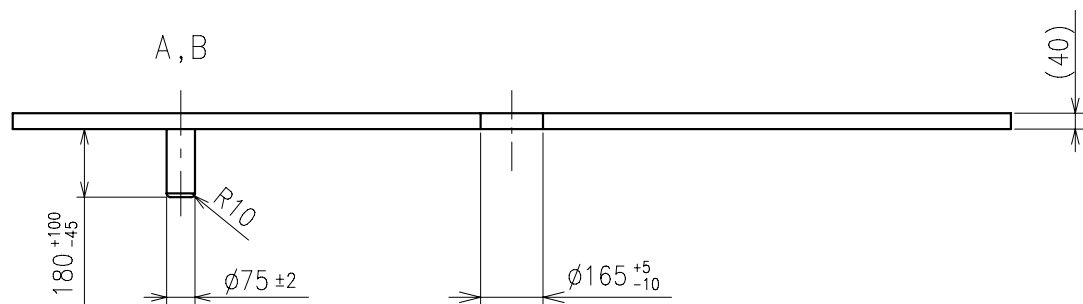
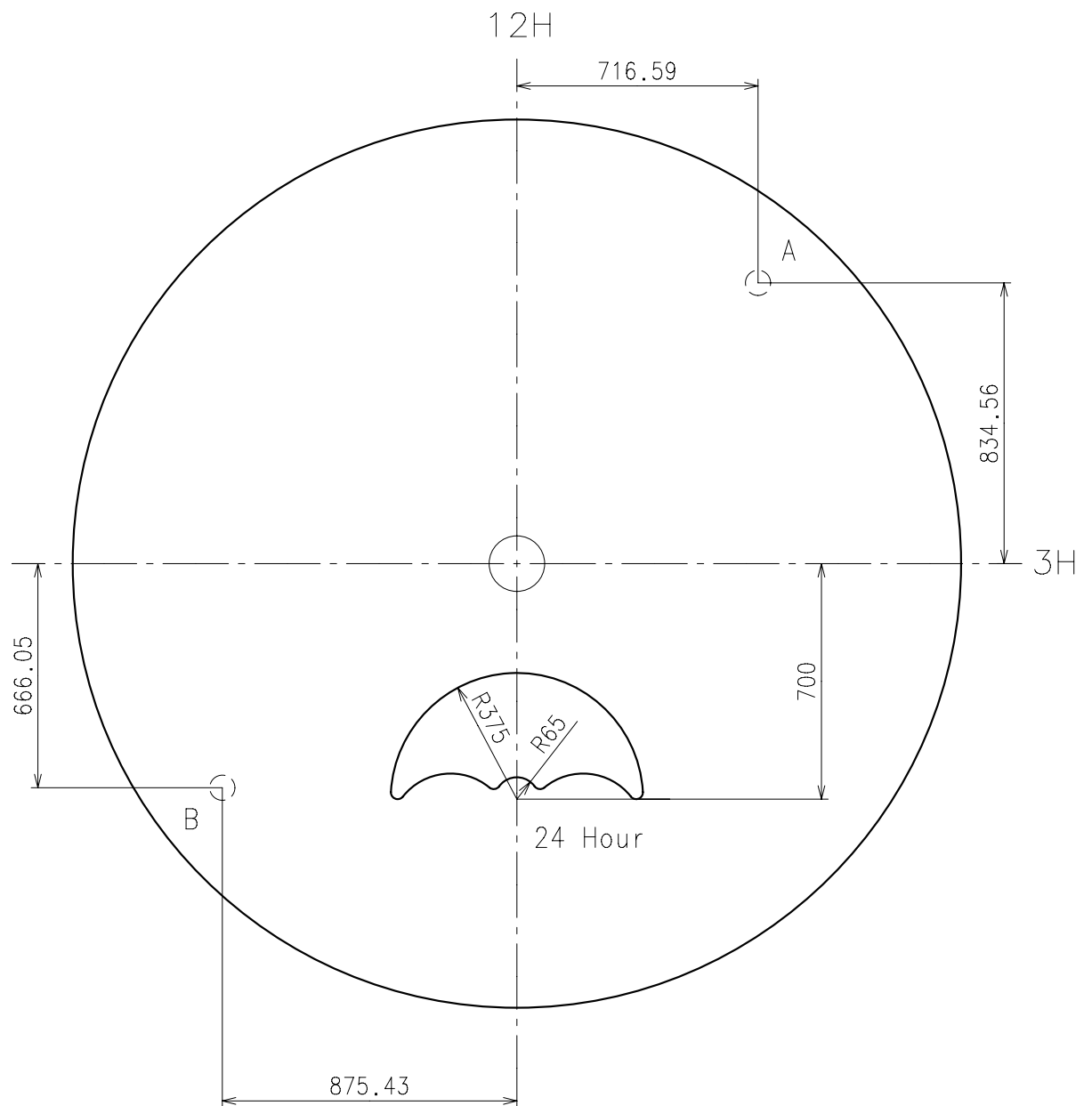


※ Not threaded

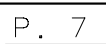
	Part No.	S1	S2	※ S3
Type-1 (Standard)	0351177	1366	1964	60
Type-2	0351578	2507	3105	650

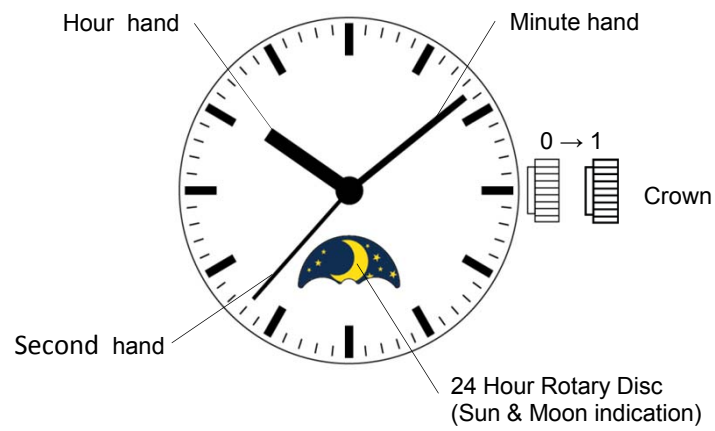
Material : Steel

Hardness : Vickers 600±50









Crown position		
	0 click	1st click
Crown	Free	Time setting