

Watch Movement Specification and Drawing

CALENDAR

Cal. VX62E

Movement Size

13 1/2'''

Casing Diameter

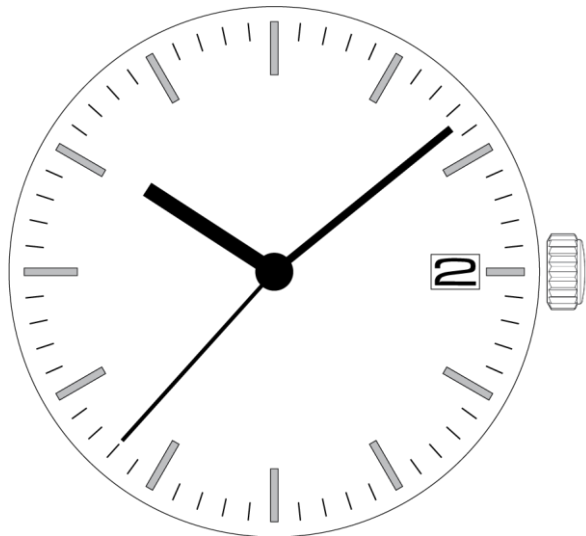
Ø 30.6mm

Height

3.63mm

Battery Life

3 years



Date: 4/Aug./'23

Cal. VX62E

Items	Rev.	Page
Specifications	01	1
Appearance	01	2
Casing	01	3
Hand fitting	01	4
Hand setting stem	01	5
Dial-01	00	6-01
Dial-02	00	6-02
Casing ring	00	7

Analog Quartz 13 1/2" Slim Movement / Three hands(H/M/S) with Calendar**1. MOVEMENT DIMENSIONS**

Outside diameter	$\phi 31.20\text{mm} \times 28.00\text{mm}(3\text{-}9\text{H}) \times 29.36\text{mm}(12\text{-}6\text{H})$
Casing diameter	$\phi 30.60\text{mm} \times 27.40\text{mm}(3\text{-}9\text{H}) \times 28.80\text{mm}(12\text{-}6\text{H})$
Total height	3.63mm (including battery)

2. TIME STANDARD

Type of quartz oscillator	Tuning fork
Frequency of quartz oscillator	32,768 Hz
Accuracy	± 20 seconds per month (on wrist)
Operating temperature range	-5°C to $+50^{\circ}\text{C}$
Regulation device	Nil (Pre-adjusted)

3. INDICATOR / FUNCTIONS

3 Hands	Hour / Minute / Second
Calendar	Instant setting device for date calendar
Reset switch	
Setting mechanism	Crown at normal position : Free Crown pulled out 1st click : Instant date change Crown pulled out 2nd click : Time setting / Reset

4. FEATURES

Jewels	0 Jewels
Anti-magnetism	Over 1600A/m (Direct current magnetic field)
Maximum unbalance of hands	Hour hand : $0.9 \mu \text{N}\cdot\text{m}$ Minute hand : $0.9 \mu \text{N}\cdot\text{m}$ Second hand : $0.1 \mu \text{N}\cdot\text{m}$

5. BATTERY

Type / Size	Silver oxide battery / $\phi 9.5\text{mm} \times t 2.7\text{mm}$
Recommended battery	SR927SW (Maxell, Murata, Seizaiken)
Nominal voltage	1.55 V
Battery life	Approx. 3 years
Driving current consumption	Approx. $2.1 \mu \text{A}$
Operation stopping voltage	1.2 V

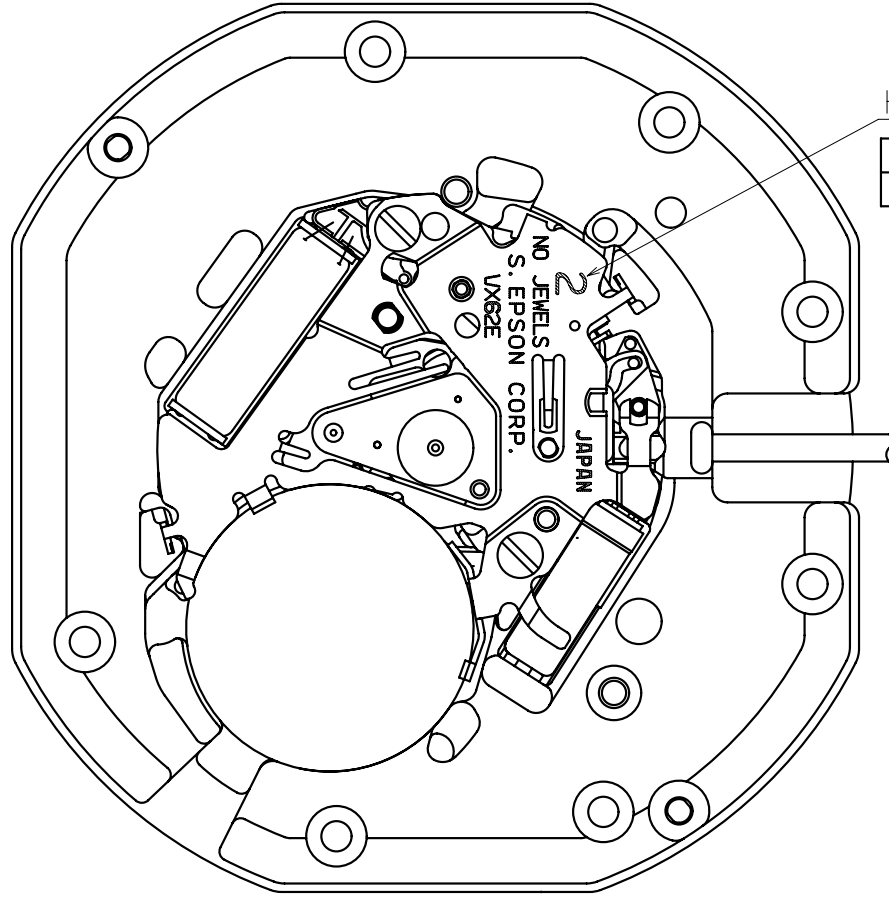
6. SEPARATED PARTS (Parts code)

Hand setting stem	0351578 or 0351177
Battery	SR927SW

7. TEST OF ACCURACY

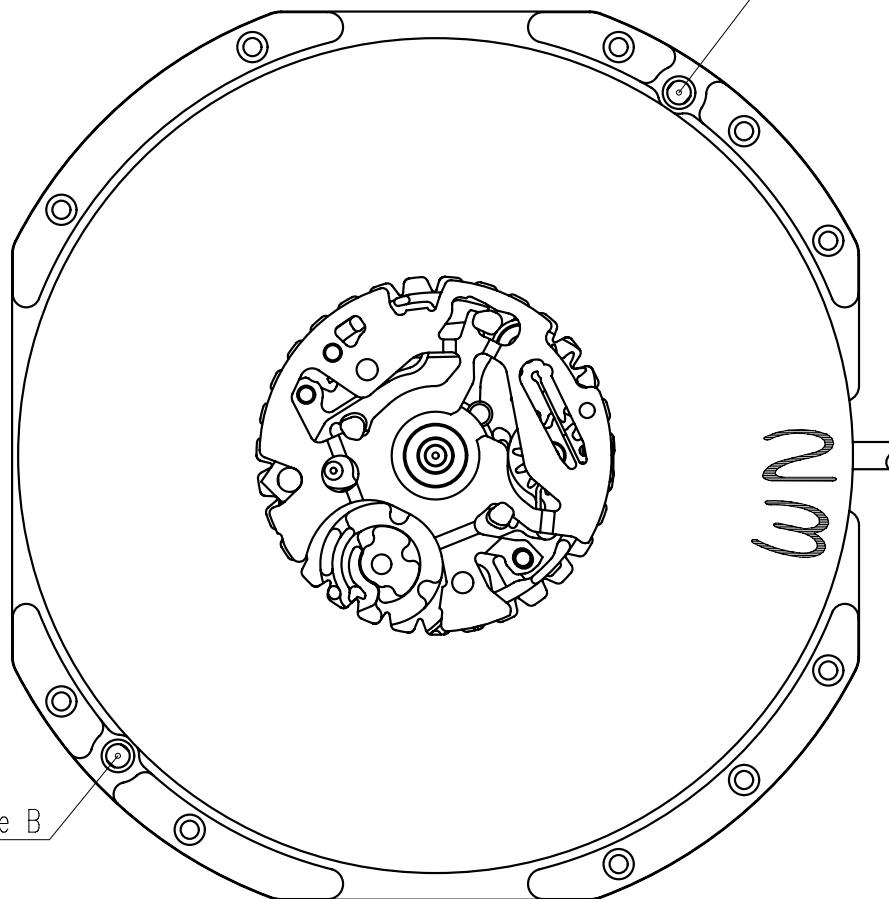
Equipment to be used	SEIKO quartz tester QT-99, Greiner quartz timer-C , Witschi Q-tester 4000
Duration of measurement	10 seconds
Microphone to be used	Electromagnetic detection type

All specifications are subject to change without notice.



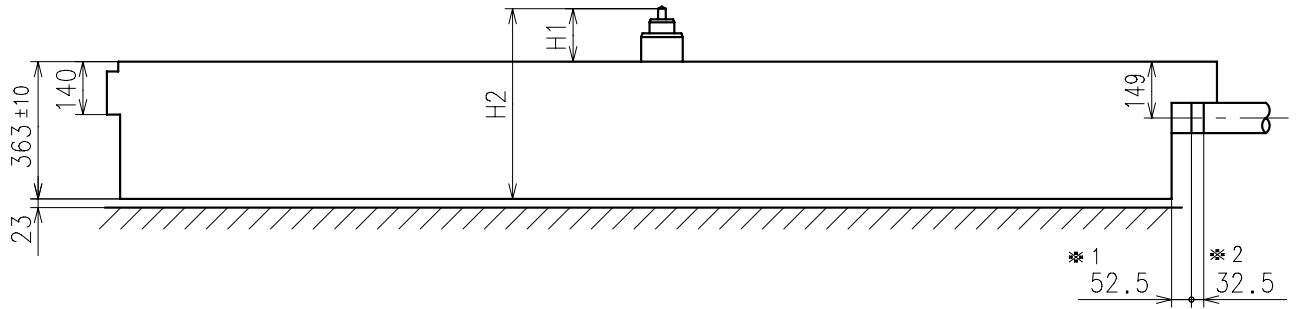
Hands type

	Mark
Type M (2)	2



Dial leg hole A

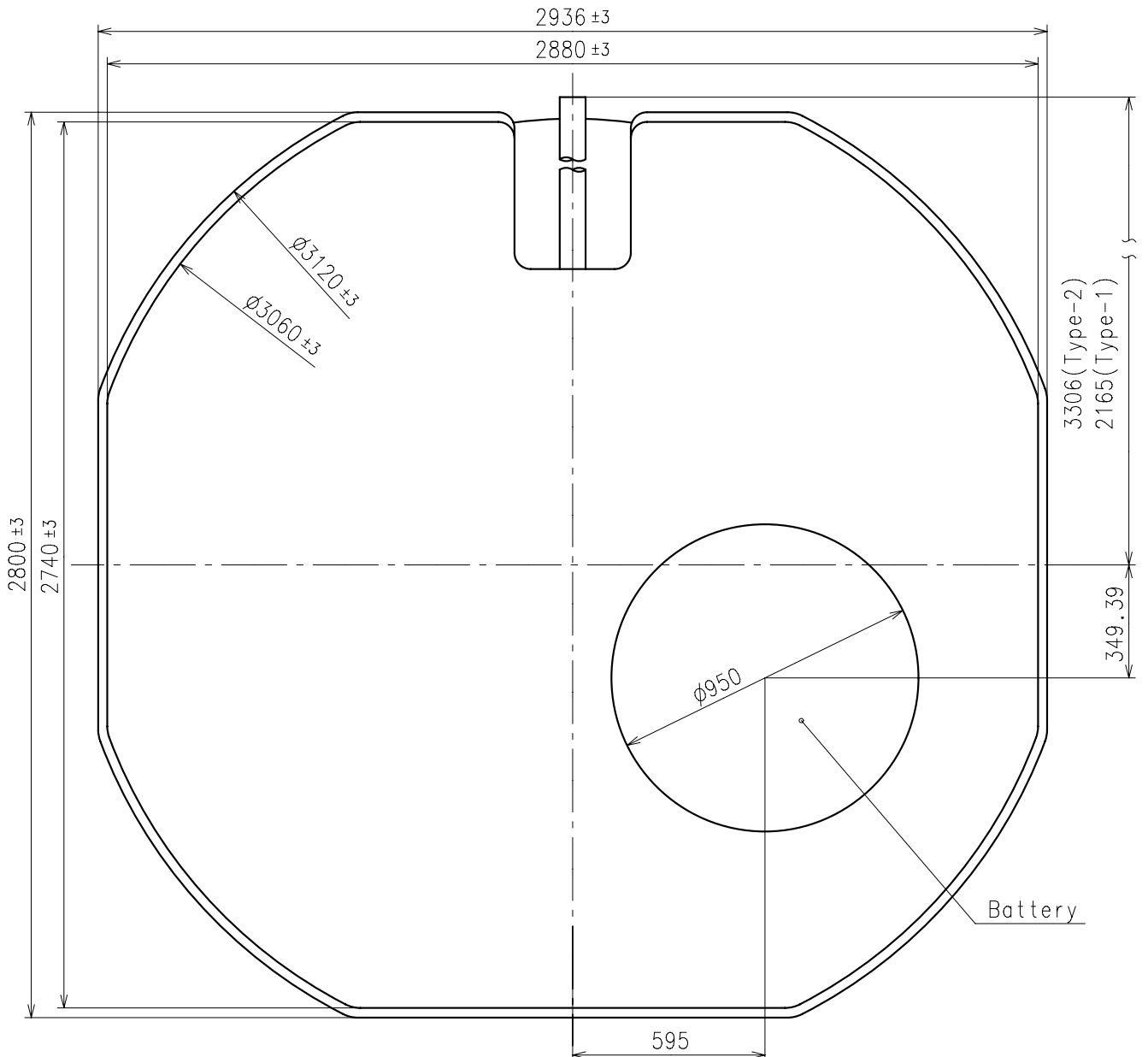
Dial leg hole B



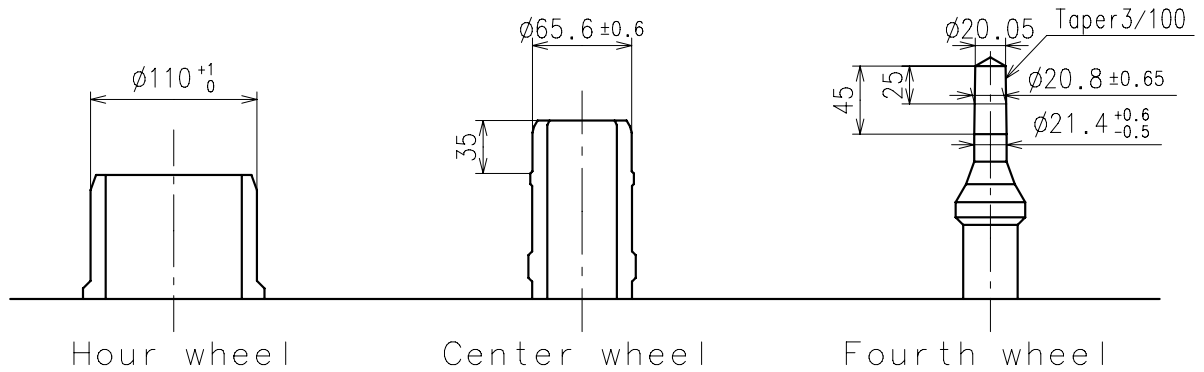
Center post		Type M (2) VX62E2**
Maximum height from dial support	H1	210
Total height including movement	H2	573

*1:First pullout stroke

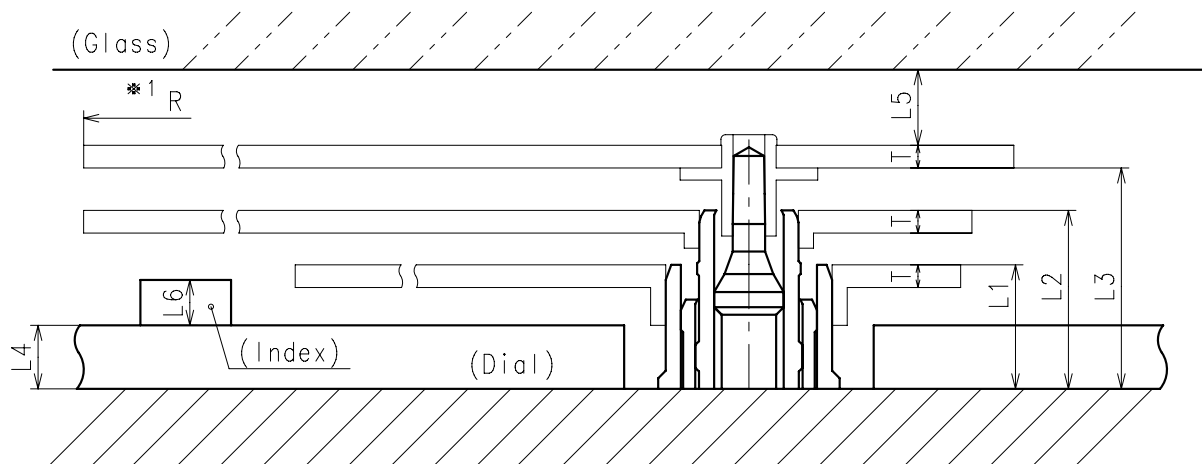
*2:Second pullout stroke



- * Hour hand unbalance $\leq 0.9\mu\text{ N}\cdot\text{m}$ ($90\mu\text{ g}\cdot\text{m}$)
- * Minute hand unbalance $\leq 0.9\mu\text{ N}\cdot\text{m}$ ($90\mu\text{ g}\cdot\text{m}$)
- * Second hand unbalance $\leq 0.1\mu\text{ N}\cdot\text{m}$ ($10\mu\text{ g}\cdot\text{m}$)

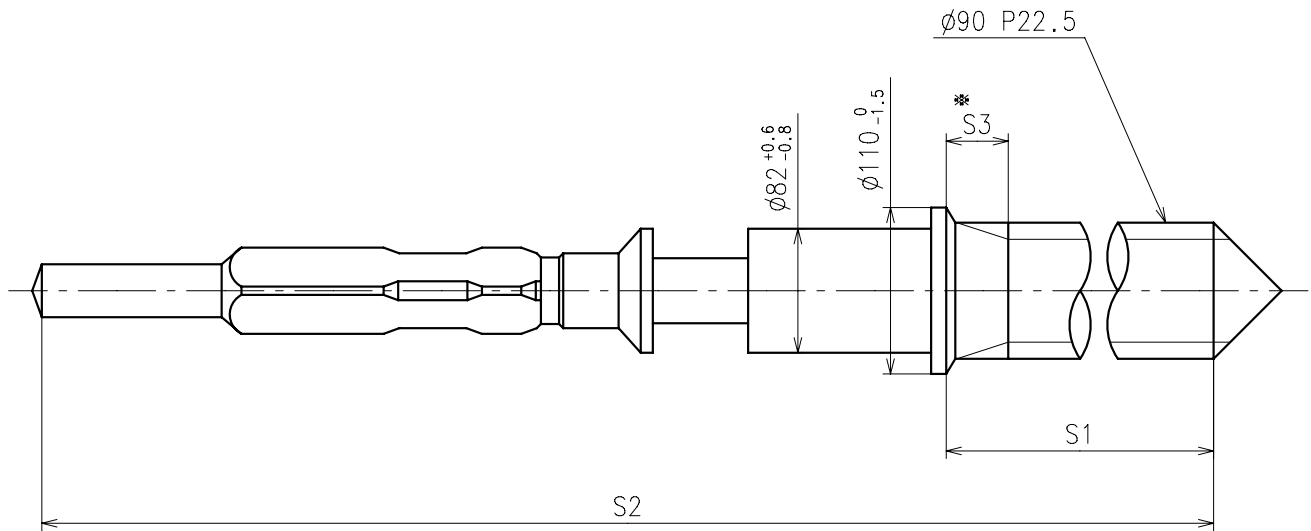


	Parts No.		
	Hour wheel	Center wheel	Fourth wheel
Type M (2) VX62E2**	0271665	0221666	0241585



	L1	L2	L3	L4	L5	L6	T	*1 R
Type M (2) VX62E2**	112	167	210	40	MIN: 50 MAX: 65	15	MAX: 1500	

*1: It is the size taken into consideration for hands attachment.
Please observe some standard value specified in unbalance when using long hands.

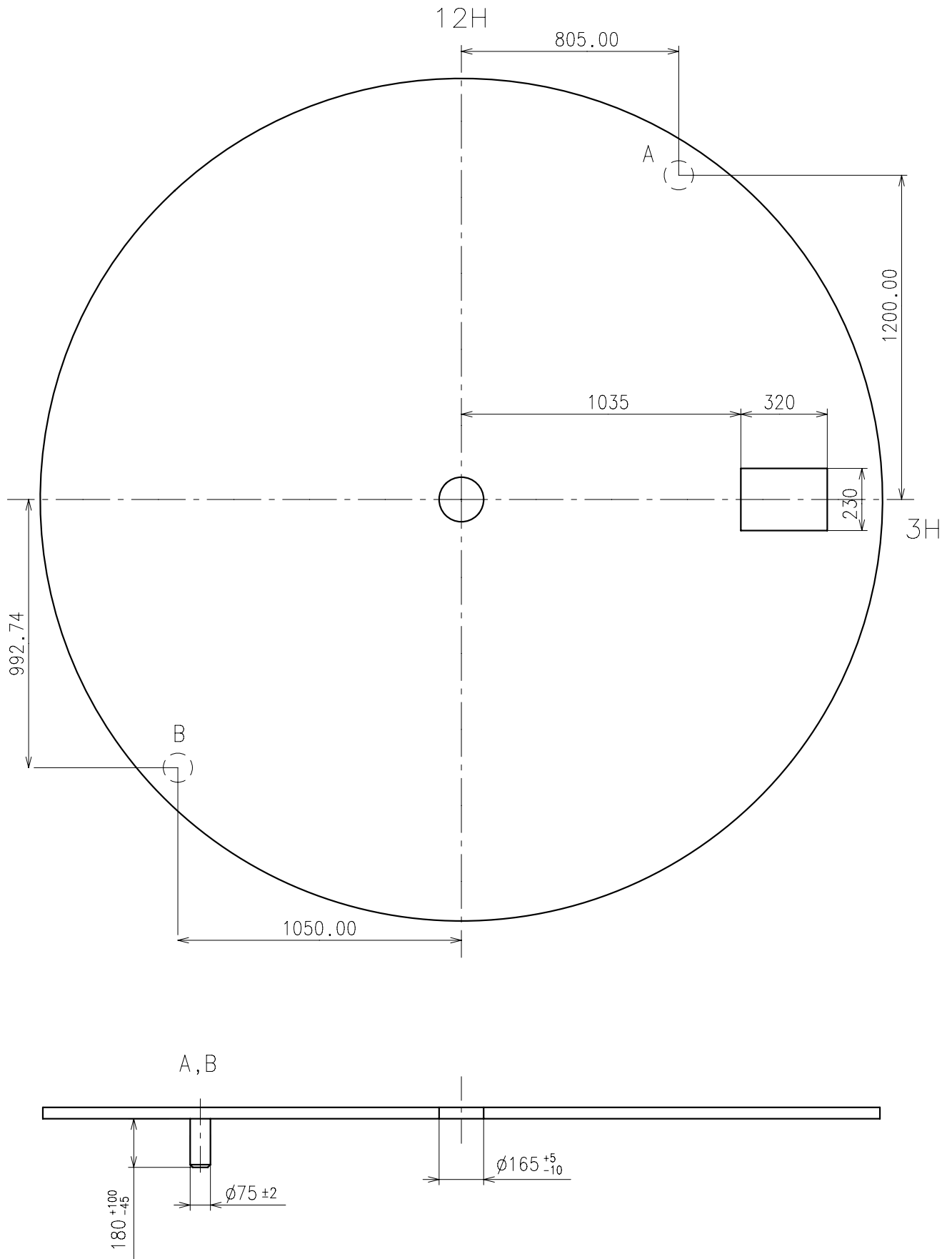


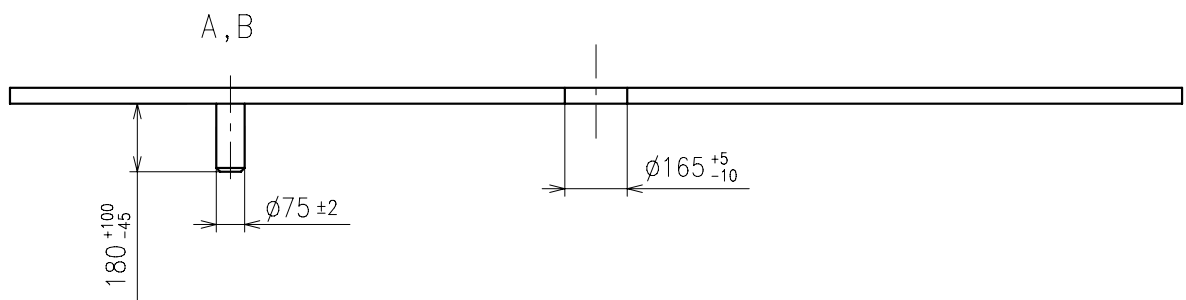
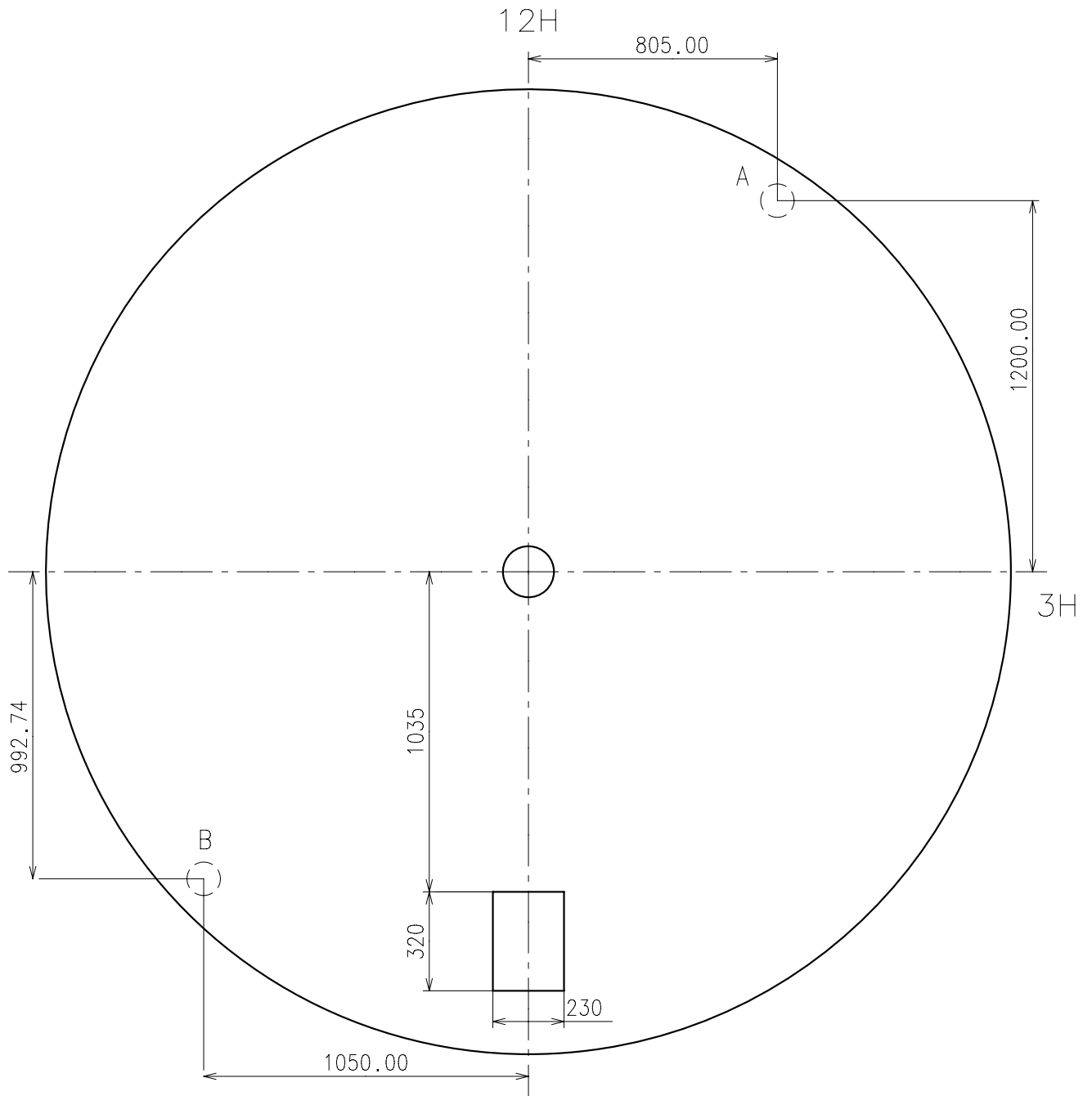
※ Not threaded

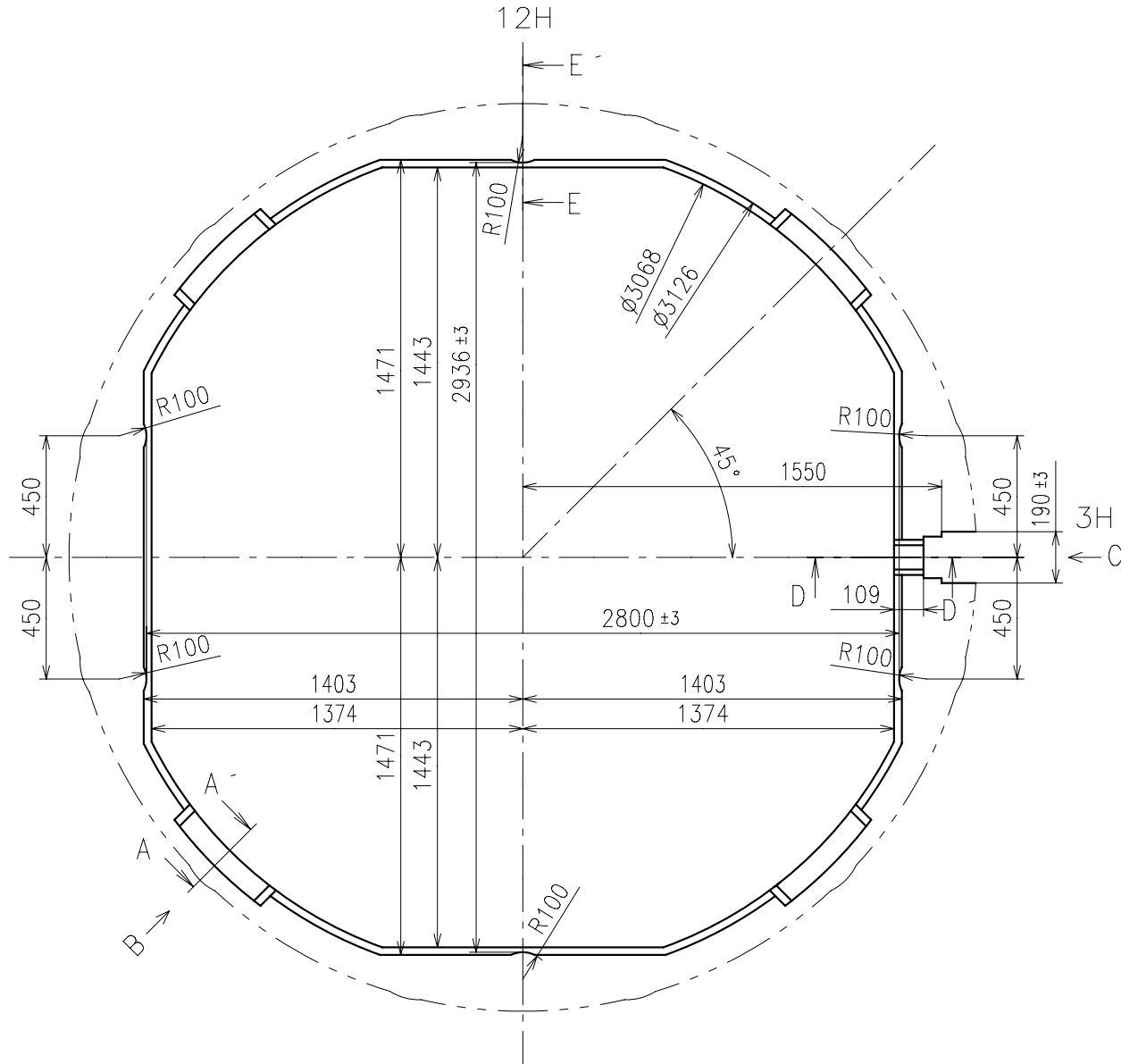
	Part No.	S1	S2	※ S3
Type-1	0351177	1366	1964	60
Type-2 (Standard)	0351578	2507	3105	650

Material : Steel

Hardness : Vickers 600±50



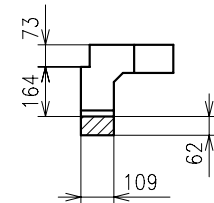
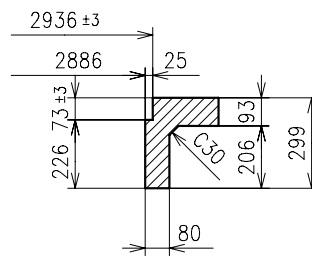
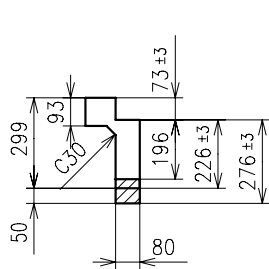




A-A section

E-E section

D-D section



B view

C view

