

## Watch Movement Specification and Drawing

**MULTI - FUNCTION**

# Cal. VX7NE

Movement Size

**12 3/4'''**

Casing Diameter

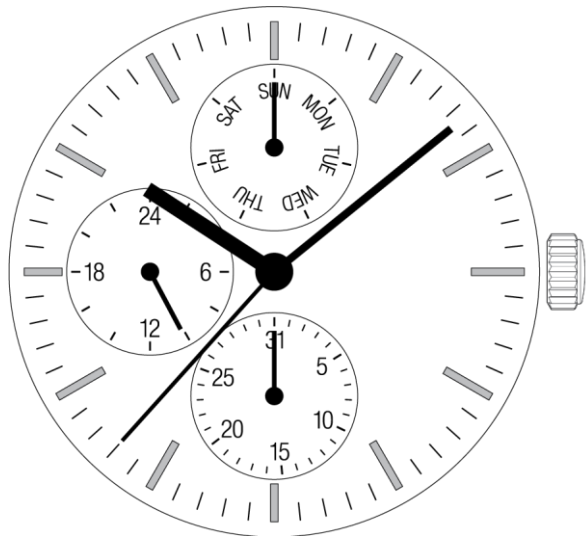
**Ø 28.6mm**

Height

**3.99mm**

Battery Life

**3 years**



Date: 18/Sep./'20

# Cal. VX7NE

Items	Rev.	Page
Specifications	02	1
Appearance	02	2
Casing	03	3
Hand fitting-01	04	4-01
Hand fitting-02	01	4-02
Hand setting stem	02	5
Dial	01	6
Casing ring	01	7
Operation	03	8

**Analog Quartz 12 3/4" Movement / 3 hands (H/M/S) and 3 eyes  
with Day / Date / 24 Hour indicators**

**1. MOVEMENT DIMENSIONS**

Outside diameter	$\phi 29.50\text{mm} \times 26.00\text{mm}(3\text{-}9\text{H}) \times 29.36\text{mm}(12\text{-}6\text{H})$
Casing diameter	$\phi 28.60\text{mm} \times 25.60\text{mm}(3\text{-}9\text{H}) \times 28.60\text{mm}(12\text{-}6\text{H})$
Total height	3.99mm (including battery)

**2. TIME STANDARD**

Type of quartz oscillator	Tuning fork
Frequency of quartz oscillator	32,768 Hz
Accuracy	$\pm 20$ seconds per month (on wrist)
Operating temperature range	$-5^{\circ}\text{C}$ to $+50^{\circ}\text{C}$
Regulation device	Nil (Pre-adjusted)

**3. INDICATOR / FUNCTIONS**

3 Hands	Hour / Minute / Second
3 Small hands	Day(12H) / Date(6H) / 24 Hour(9H)
Reset switch	
Setting mechanism	Crown at normal position : Free Crown pulled out 1st click : Instant date change Crown pulled out 2nd click : Time setting (Day change) / Reset

**4. FEATURES**

Jewels	0 Jewels
Anti-magnetism	Over 1600A/m (Direct current magnetic field)
Maximum unbalance of hands	Second hand : $0.1 \mu \text{N}\cdot\text{m}$ Minute hand : $0.9 \mu \text{N}\cdot\text{m}$ Hour hand : $0.9 \mu \text{N}\cdot\text{m}$

**5. BATTERY**

Type / Size	Silver oxide battery / $\phi 9.5\text{mm} \times t 2.7\text{mm}$
Recommended battery	SR927SW ( Maxell, Murata, Seizaiken )
Nominal voltage	1.55 V
Battery life	Approx. 3 years
Driving current consumption	Approx. $2.1 \mu \text{A}$
Operation stopping voltage	1.2 V

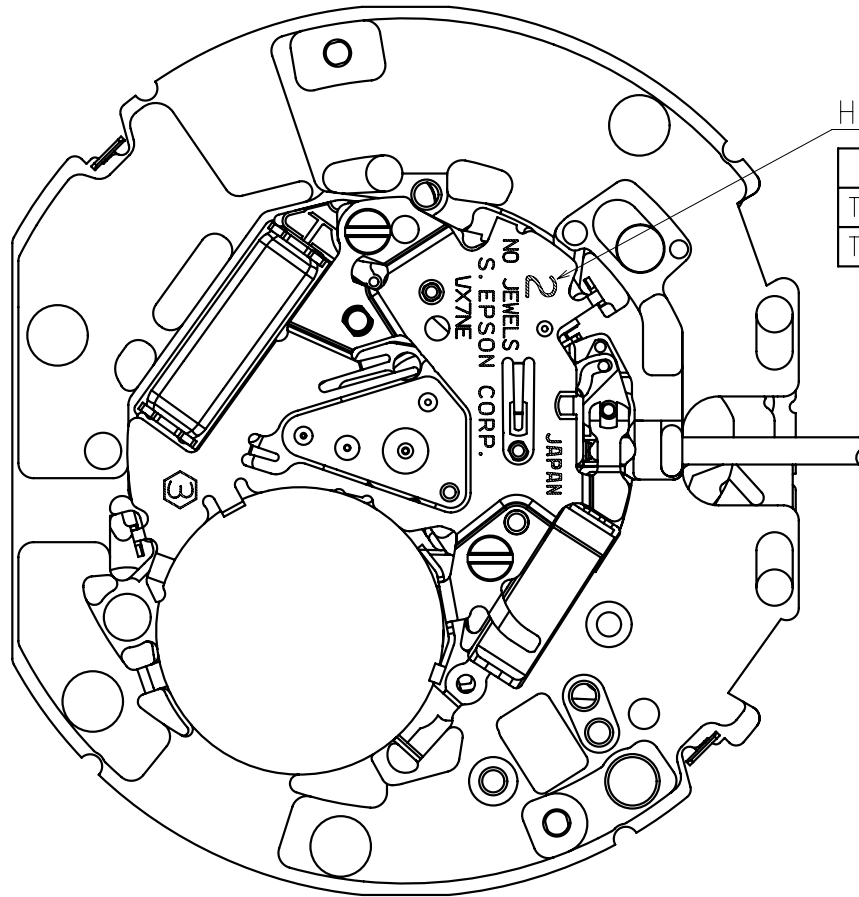
**6. SEPARATED PARTS (Parts code)**

Hand setting stem	0351578 or 0351177
Battery	SR927SW

**7. TEST OF ACCURACY**

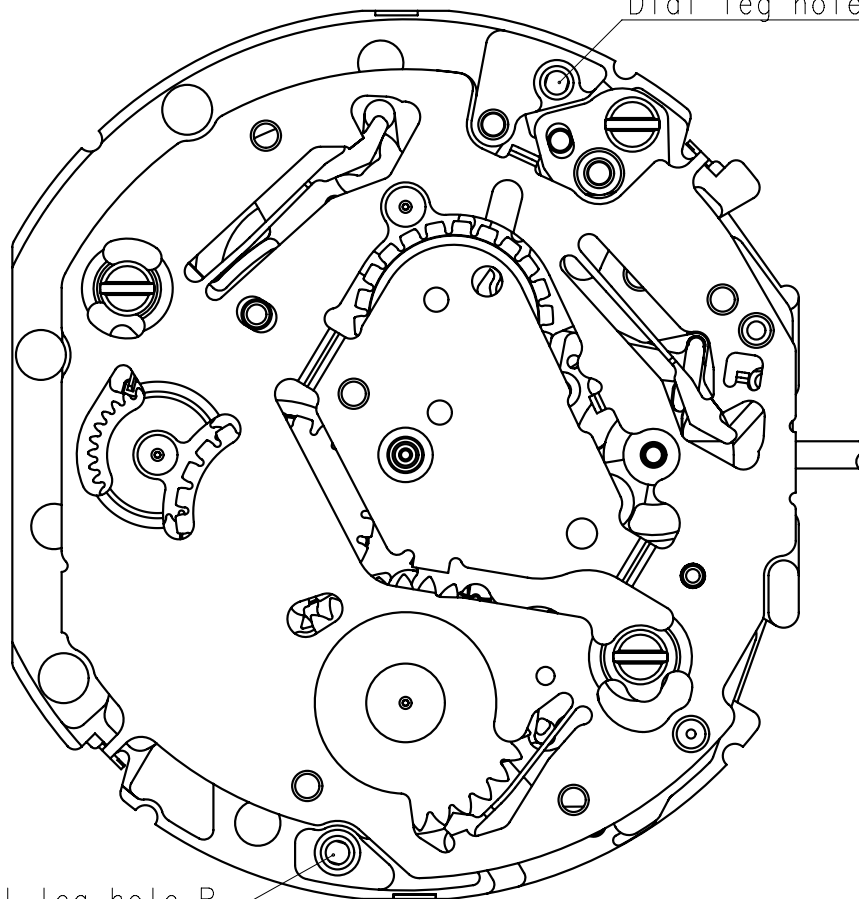
Equipment to be used	SEIKO quartz tester QT-99, Greiner quartz timer-C , Witschi Q-tester 4000
Duration of measurement	10 seconds
Microphone to be used	Electromagnetic detection type

All specifications are subject to change without notice.



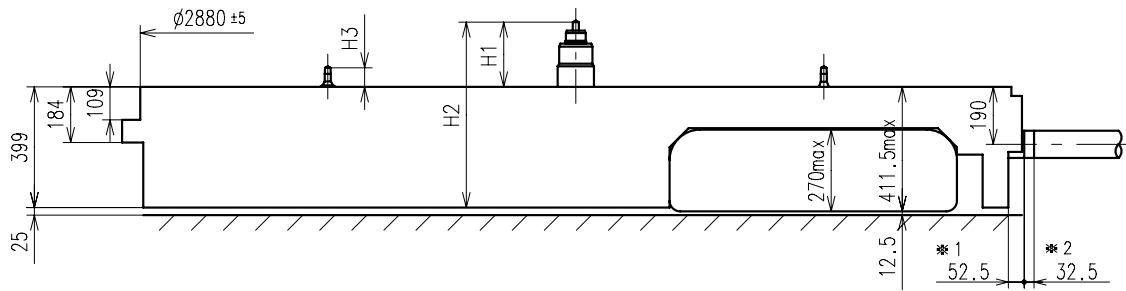
Hands type

	Mark
Type M	2
Type L	3



Dial leg hole A

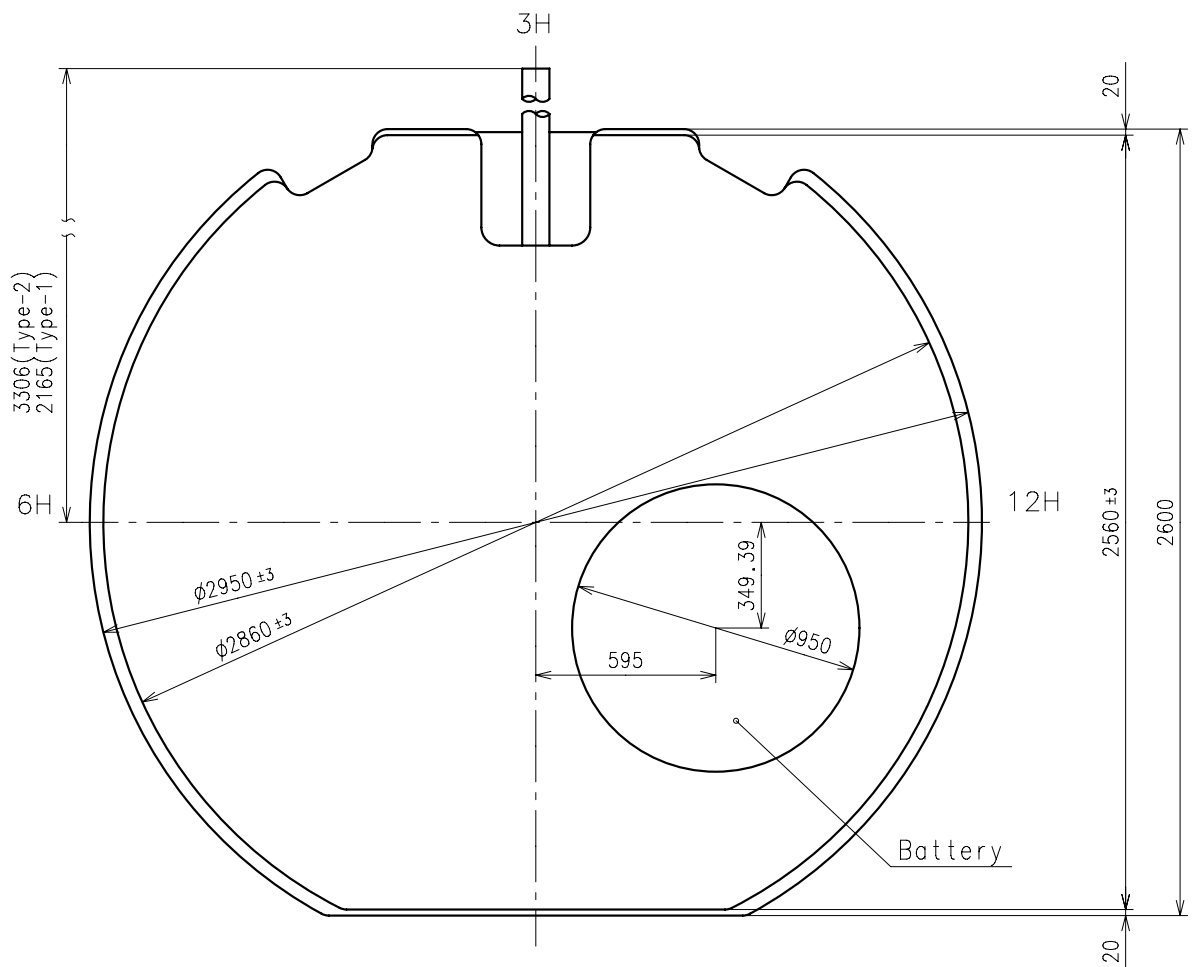
Dial leg hole B



Center post		Type M (2) VX7NE**	Type L (3) VX7NE**
Maximum height from dial support	H1	214	256
Total height including movement	H2	613	655
Maximum height from dial support	H3	63	111

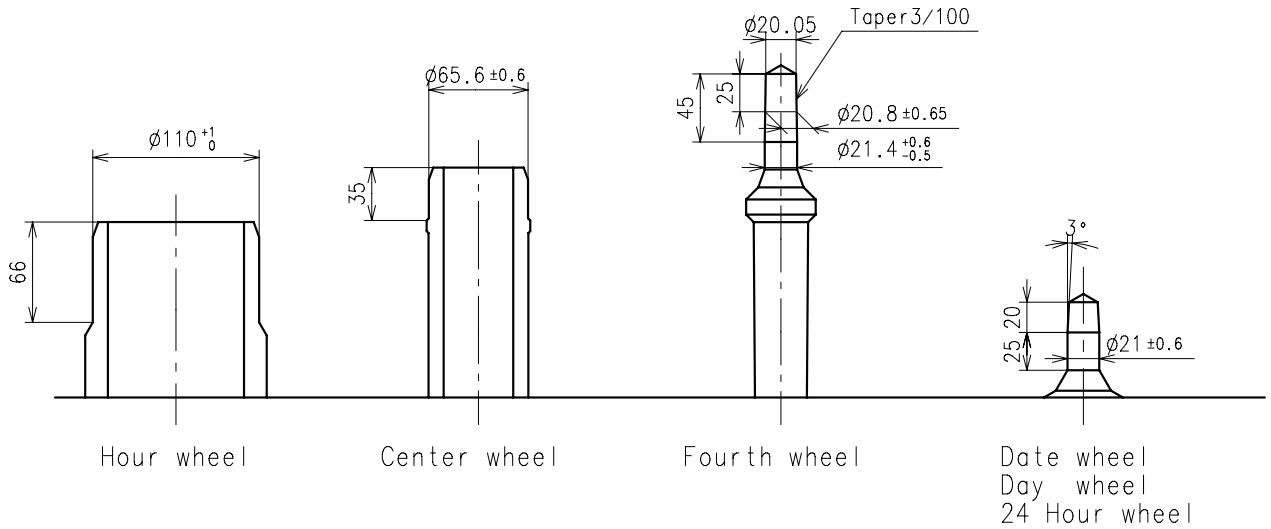
\*1: First pullout stroke

\*2: Second pullout stroke

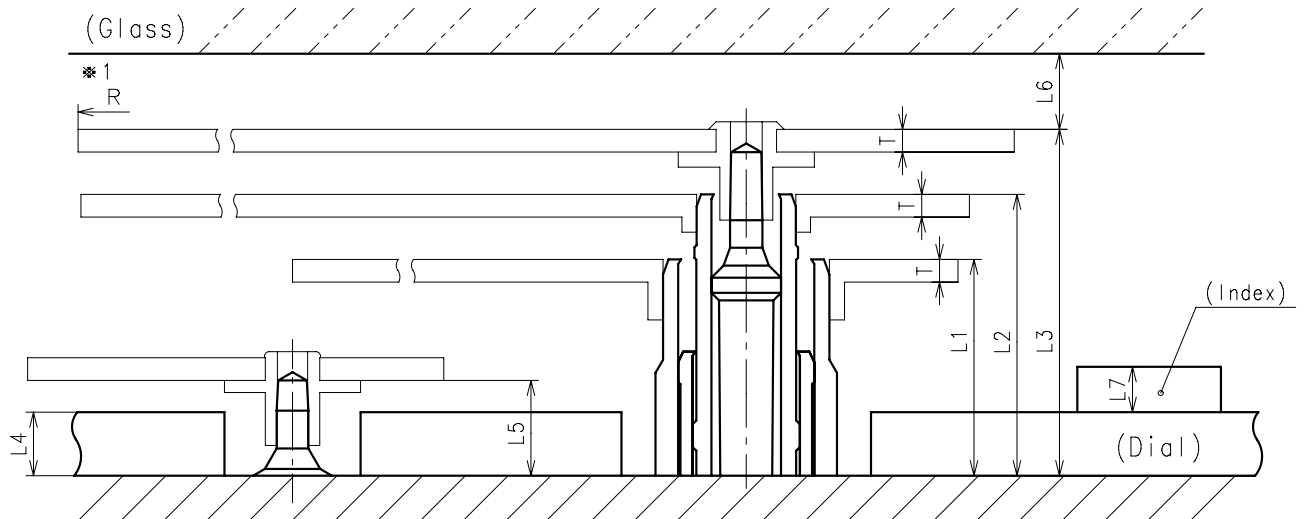


※ Unbalance

- Hour hand  $\leq 0.9\mu \text{ N} \cdot \text{m}$  ( $90\mu \text{ g} \cdot \text{m}$ )
- Minute hand  $\leq 0.9\mu \text{ N} \cdot \text{m}$  ( $90\mu \text{ g} \cdot \text{m}$ )
- Second hand  $\leq 0.1\mu \text{ N} \cdot \text{m}$  ( $10\mu \text{ g} \cdot \text{m}$ )



	Parts No.					
	Hour wheel	Center wheel	Fourth wheel	Date wheel	Day wheel	24 Hour wheel
Type M (2) VX7NE**	0271658	0221602	0241559	0970503	1002546	1002559

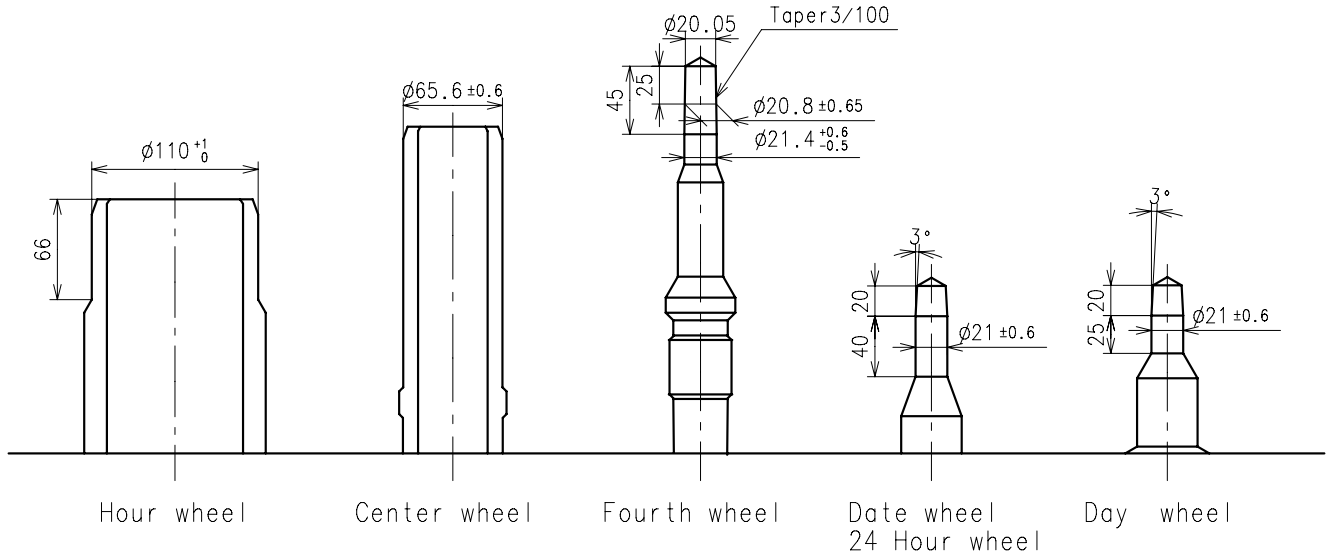


	L1	L2	L3	L4	L5	L6	L7	T	*1 R
Type M (2) VX7NE**	143	186	229	40	63	MIN: 50	MAX: 50	15	MAX: 1250

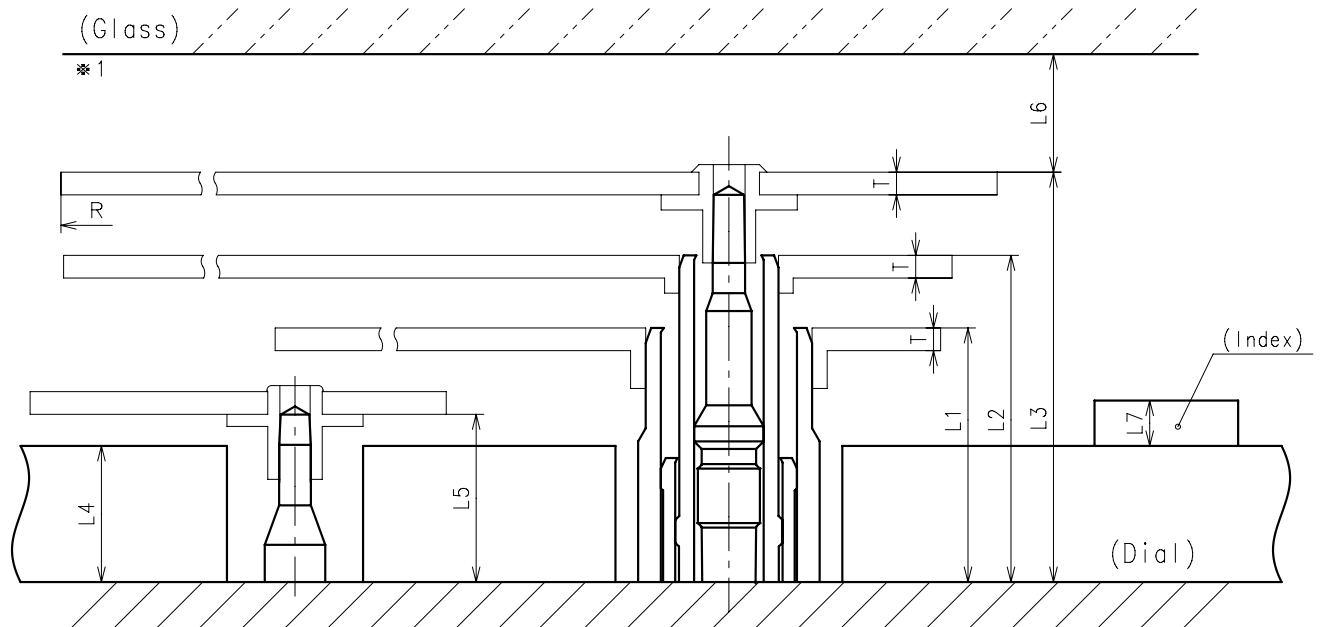
\*1: It is the size taken into consideration for hands attachment.  
Please observe some standard value specified in unbalance when using long hands.

※ Unbalance

- Hour hand  $\leq 0.9\mu \text{ N} \cdot \text{m}$  ( $90\mu \text{ g} \cdot \text{m}$ )
- Minute hand  $\leq 0.9\mu \text{ N} \cdot \text{m}$  ( $90\mu \text{ g} \cdot \text{m}$ )
- Second hand  $\leq 0.1\mu \text{ N} \cdot \text{m}$  ( $10\mu \text{ g} \cdot \text{m}$ )

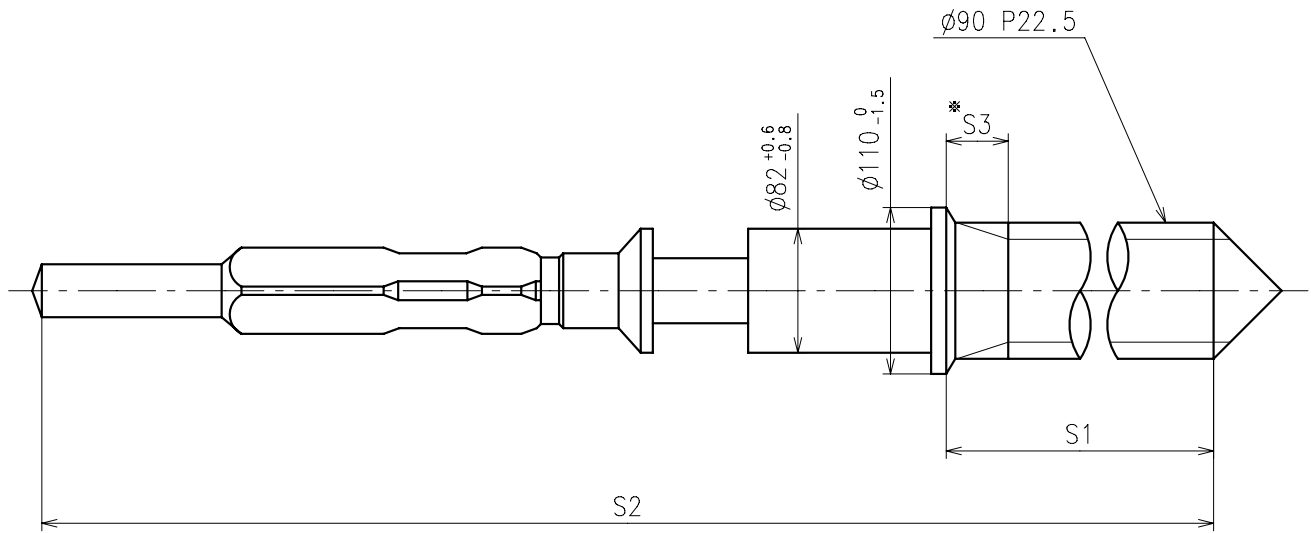


	Parts No.					
	Hour wheel	Center wheel	Fourth wheel	Date wheel	Day wheel	24 Hour wheel
Type L (3) VX7NE**	0271684	0221662	0241592	0970504	1002547	1002565



	L1	L2	L3	L4	L5	L6	L7	T	*1 R
Type L (3) VX7NE**	168	216	271	90	111	MIN: 50	MAX: 50	15	MAX: 1500

\*1: It is the size taken into consideration for hands attachment.  
Please observe some standard value specified in unbalance when using long hands.



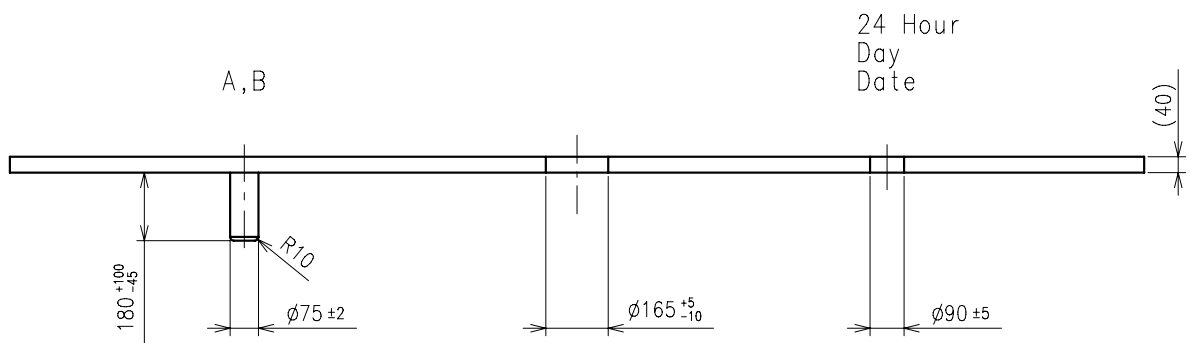
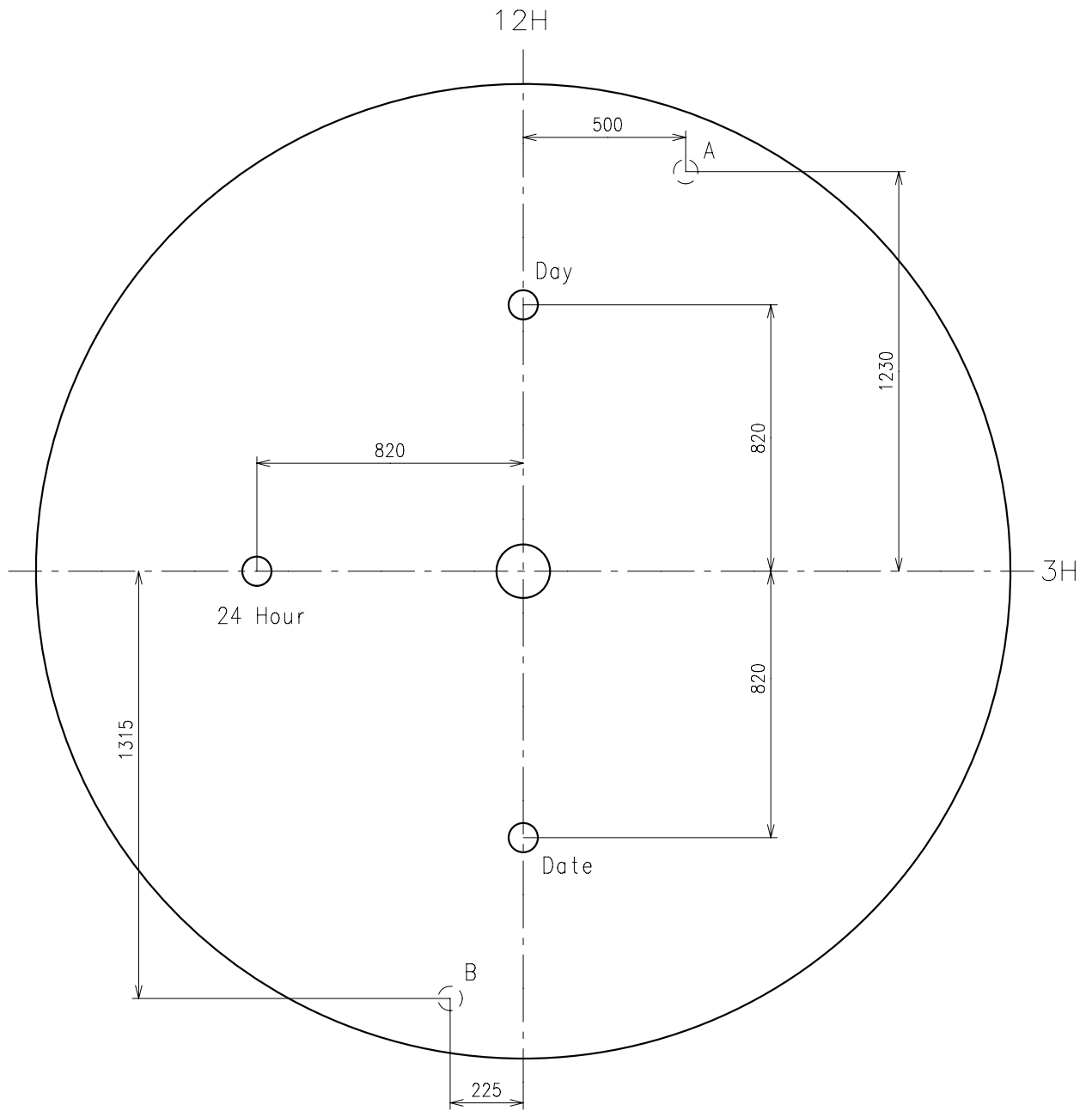
※ Not threaded

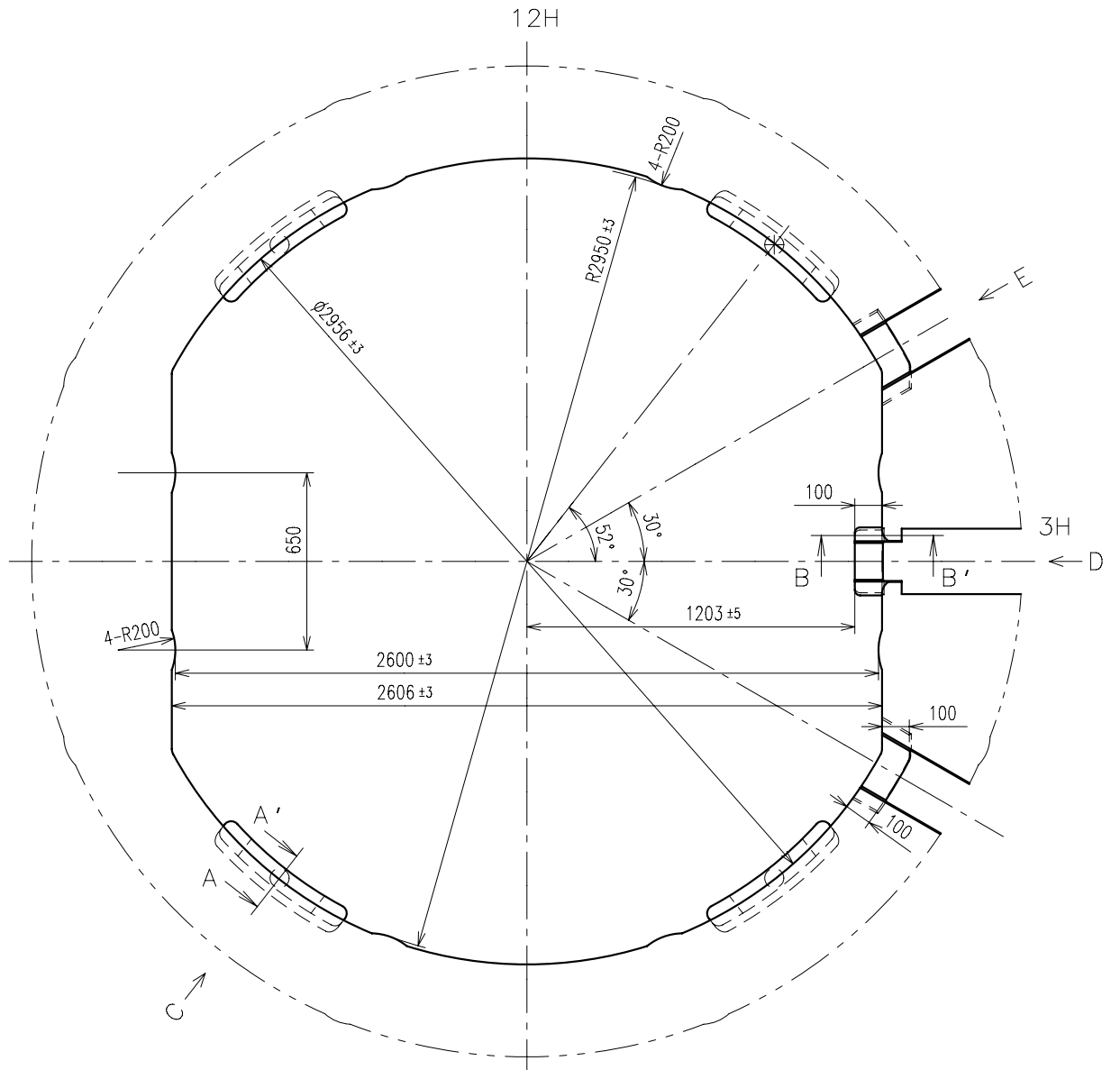
	Part No.	S1	S2	※ S3
Type-1	0351177	1366	1964	60
Type-2 (Standard)	0351578	2507	3105	650

Material : Steel

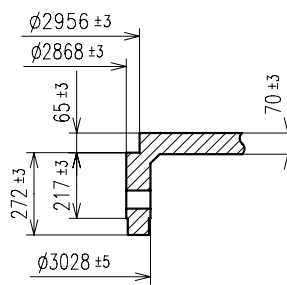
Hardness : Vickers 600±50



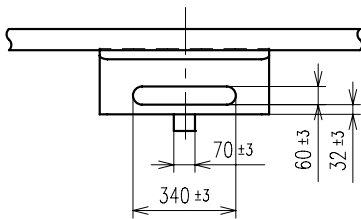




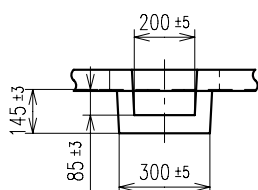
A-A' section



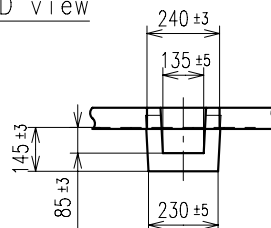
C view



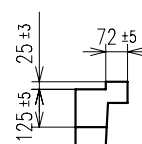
E view

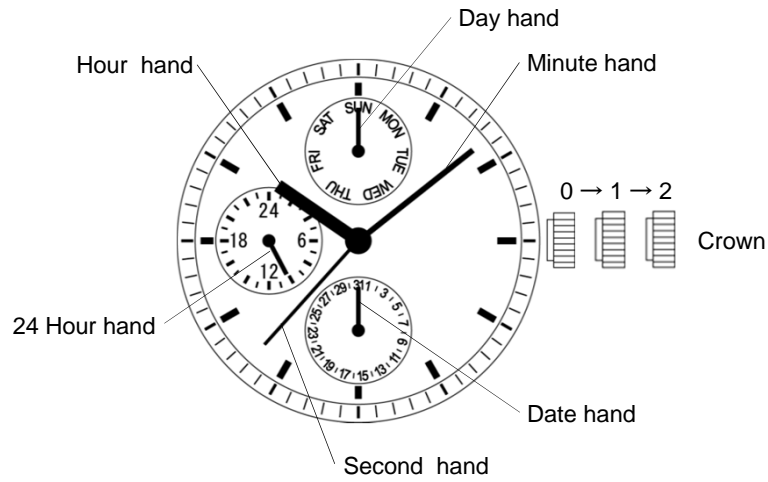


D view



B-B' section





		Crown position		
		0 click	1st click	2nd click
Crown		Free	Turn counterclockwise for date change	Time setting (Day change)

\* Do not set the day and date between 9:00 PM and 4:00 AM. Otherwise, the day and date may not change properly.