

Watch Movement Specification and Drawing

STANDARD

Cal. Y120F

Movement Size

6 3/4 × 8'''

Casing Diameter

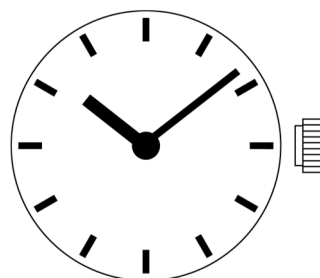
15.3 × 17.8 mm

Height

2.99mm

Battery Life

3 years

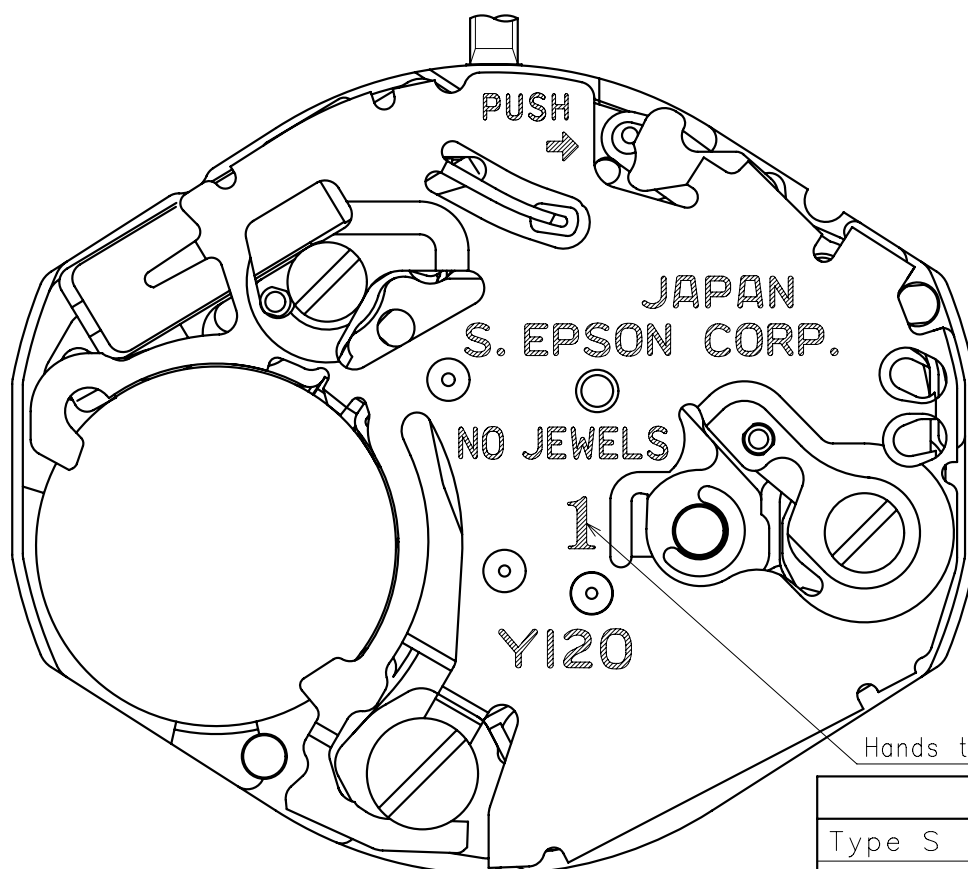


Date: 30/Jul./'19

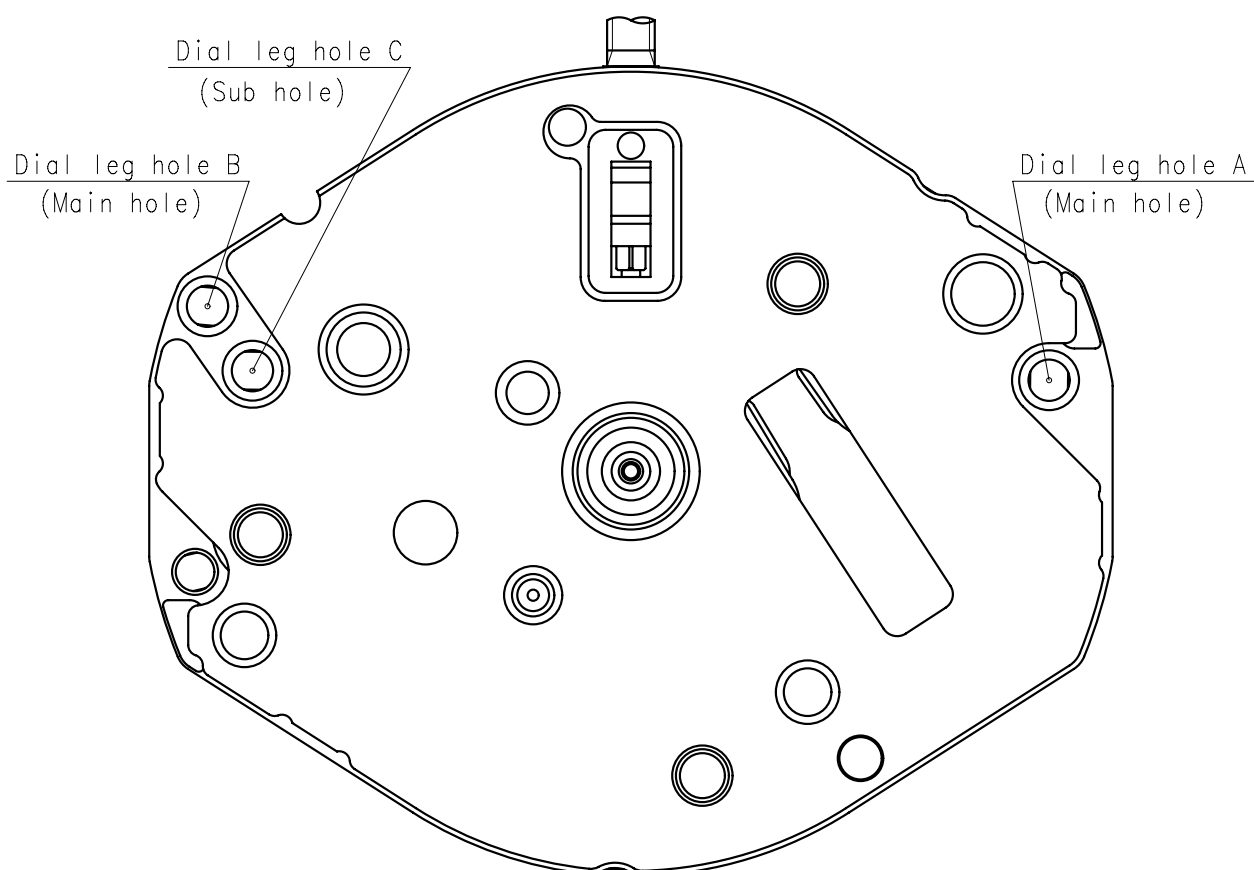
Cal. Y120F

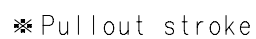
Items	Rev.	Page
Specifications	00	1
Appearance	01	2
Casing	01	3
Hand fitting	02	4
Hand setting stem	00	5
Dial	00	6
Casing ring	00	7

Cal.	Y120F	Specifications		Date : 30/Apr./'18	
				Rev. : 00	
Analog Quartz 6 3/4 × 8''' Standard Series Movement / Two Hands (H/M)					
1. MOVEMENT DIMENSIONS					
Outside diameter		15.30mm(3-9H) × 18.20mm(12-6H)			
Casing diameter		15.30mm(3-9H) × 17.80mm(12-6H)			
Total height		2.99mm			
2. TIME STANDARD					
Type of quartz oscillator		Tuning fork			
Frequency of quartz oscillator		32,768 Hz			
Accuracy		±20 seconds per month (on wrist)			
Operating temperature range		−5°C to +50°C			
Regulation device		Nil (Pre-adjusted)			
3. INDICATOR / FUNCTIONS					
2 Hands		Hour / Minute			
Reset switch					
Setting mechanism		Crown at normal position		: Free	
		Crown pulled out 1st click		: Time setting / Reset	
4. FEATURES					
Jewels		0 Jewels			
Anti-magnetism		Over 1600A/m (Direct current magnetic field)			
Maximum unbalance of hands		Minute hand		: 0.6 μ N·m	
		Hour hand		: 0.5 μ N·m	
5. BATTERY					
Type / Size		Silver oxide battery / φ 6.8mm × t 2.6mm			
Recommended battery		SR626SW (Maxell, Sony)			
Nominal voltage		1.55 V			
Battery life		Approx. 3 years			
Driving current consumption		Approx. 1.04 μ A			
Operation stopping voltage		1.1 V			
6. SEPARATED PARTS (Parts code)					
Hand setting stem		0354788 or 0354787			
Battery		SR626SW			
7. TEST OF ACCURACY					
Equipment to be used		SEIKO quartz tester QT-99, Greiner quartz timer-C , Witschi Q-tester 4000			
Duration of measurement		10 seconds			
Microphone to be used		Electromagnetic detection type			
All specifications are subject to change without notice.					



	Mark
Type S (1)	1
Type LI (3)	3
Type LII (4)	4





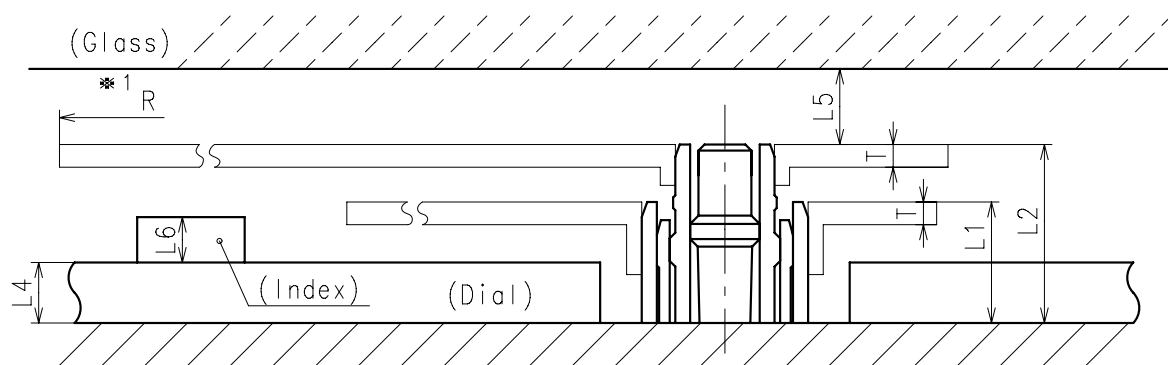
Technical drawing of a battery with the following dimensions and labels:

- Overall width: 1820 ± 3
- Overall height: 1530 ± 3
- Top width (Type-2): 2447
- Top width (Type-1): 2172
- Left side height: 145
- Internal circular feature diameter: $\phi 680$
- Internal circular feature radius: 525
- Internal circular feature diameter: $\phi 1530$
- Right side height (top): 730
- Right side height (bottom): $\phi 1850 \pm 3$
- Right side height (middle): $\phi 1810 \pm 3$
- Bottom width: 1780 ± 3
- Label: battery

- ※ Minute hand unbalance $\leq 0.6\mu\text{ N}\cdot\text{m}$ ($60\mu\text{ g}\cdot\text{m}$)
- ※ Hour hand unbalance $\leq 0.5\mu\text{ N}\cdot\text{m}$ ($50\mu\text{ g}\cdot\text{m}$)

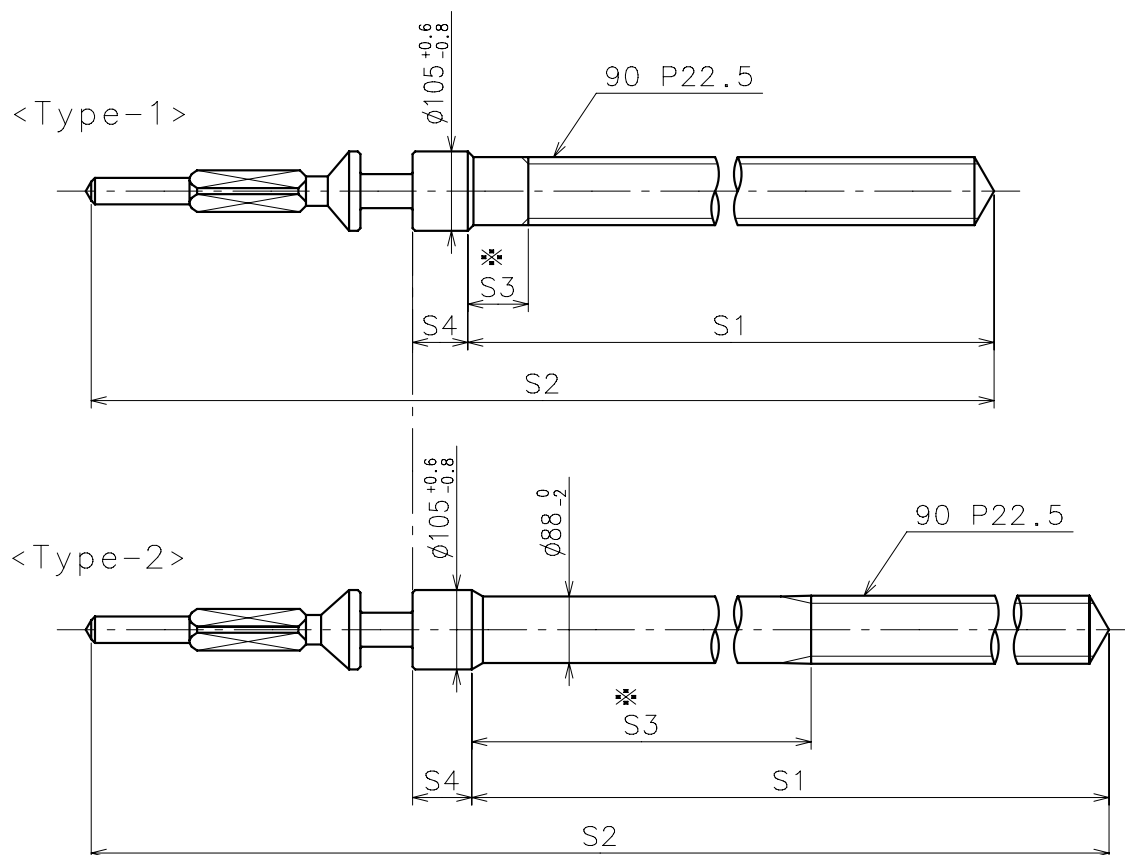


	Parts No.		Dimension	
	Hour wheel	Center wheel	K1	K2
Type S (1) Y120F1	0271796	0221797	52	33.5
Type L I (3) Y120F3	0271764	0221764	52	33.5
Type L II (4) Y120F2	0271797	0221779	60	33.5



	L1	L2	—	L4	L5	L6	T	*1 R
Type S (1) Y120F1	80	118	—	40	MIN: 50	MAX: 30	15	MAX: 1250
Type L I (3) Y120F3	128	166	—	MAX: 90	MIN: 50	MAX: 30	15	MAX: 1250
Type L II (4) Y120F2	185	226	—	MAX: 150	MIN: 50	MAX: 30	15	MAX: 1250

※ 1: It is the size taken into consideration for hands attachment.
Please observe some standard value specified in unbalance when using long hands.

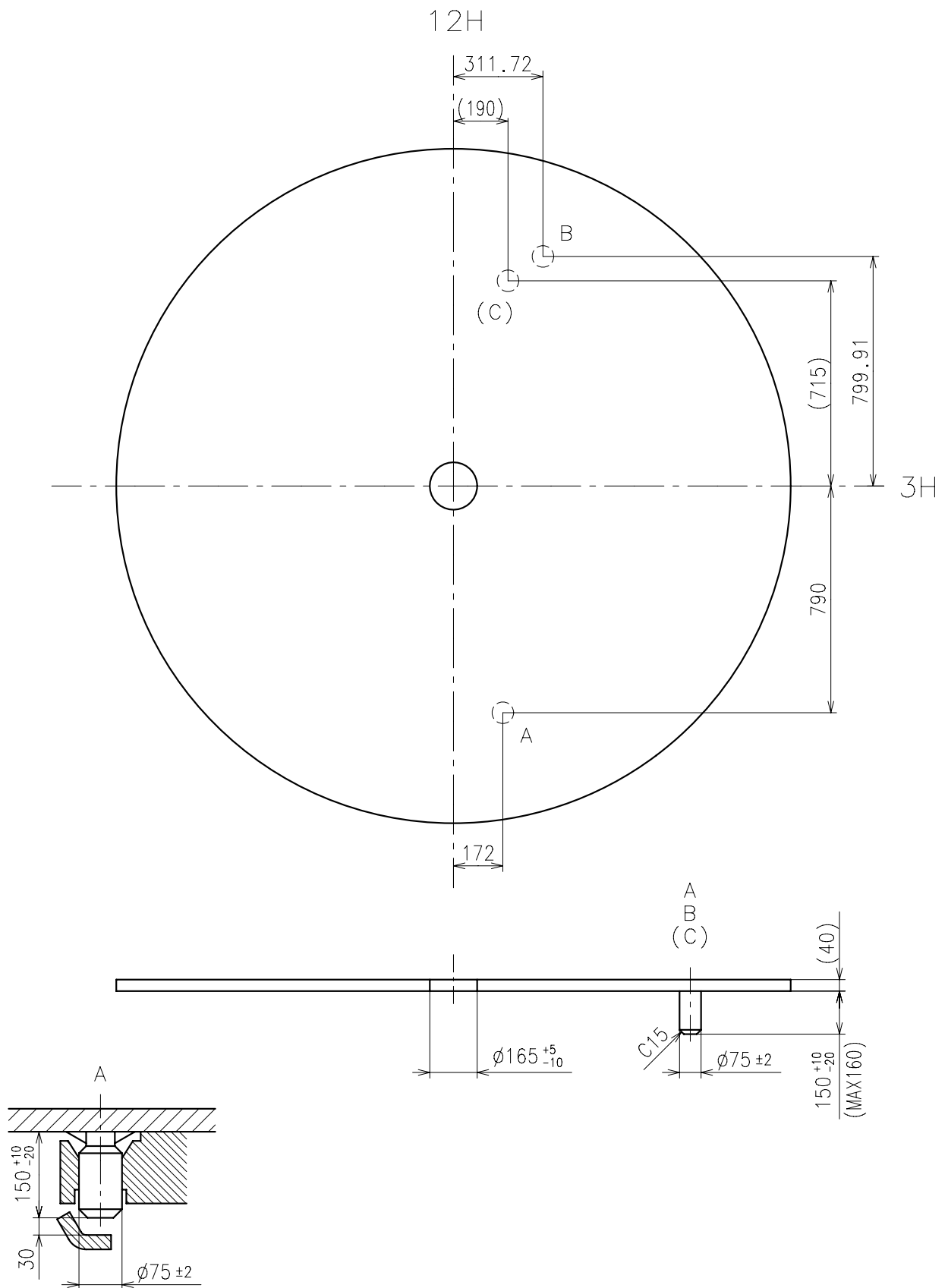


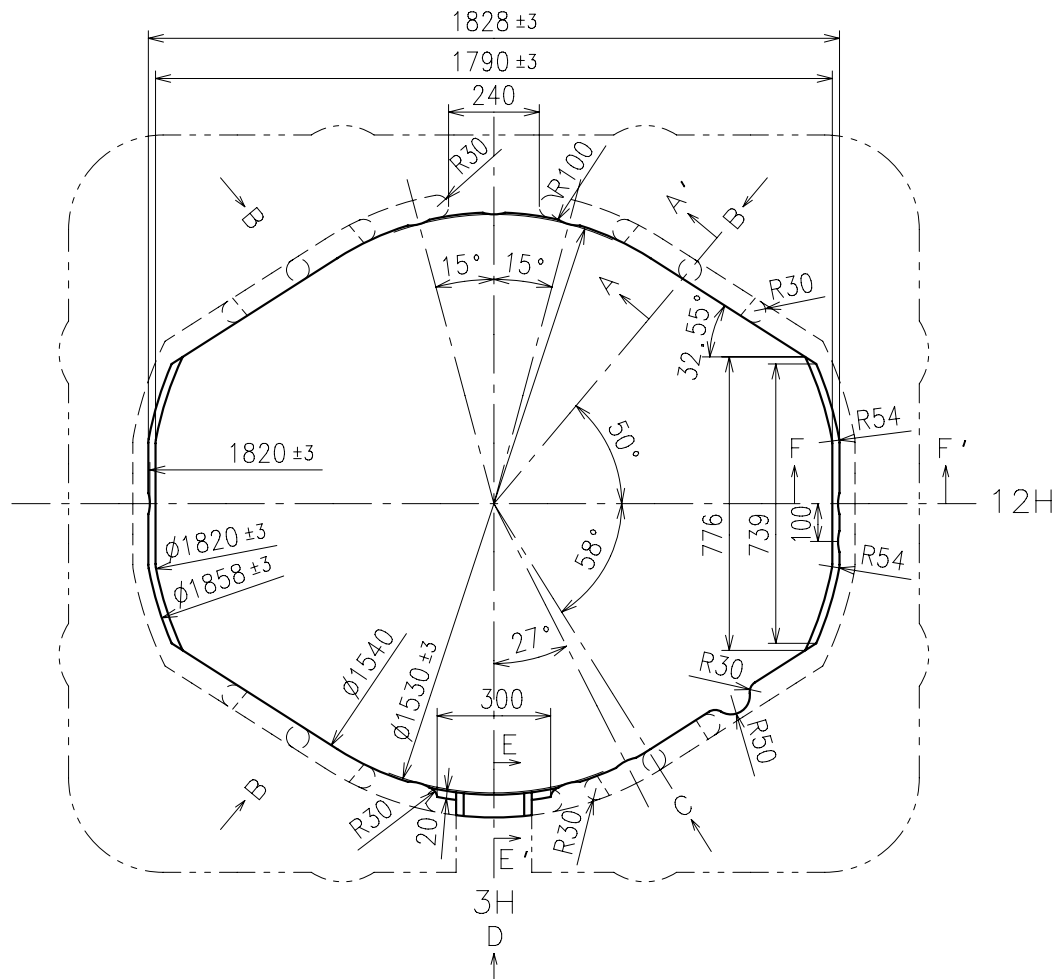
* Not threaded

	Part No.	S1	S2	* S3	S4
Type-1 (Standard)	0354788	1473	1971	80	73
Type-2	0354787	1743	2246	887	78

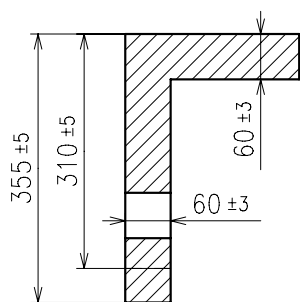
Material : Steel

Hardness : Vickers 530±50

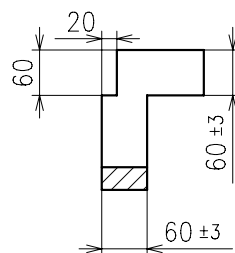




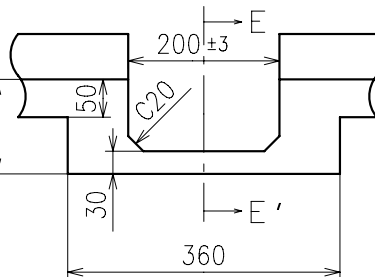
A-A' section



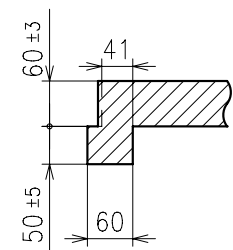
E-E' section



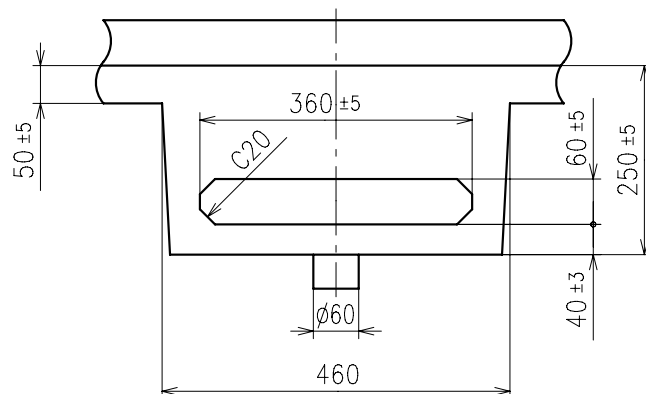
D view



F-F' section



B view



C view

