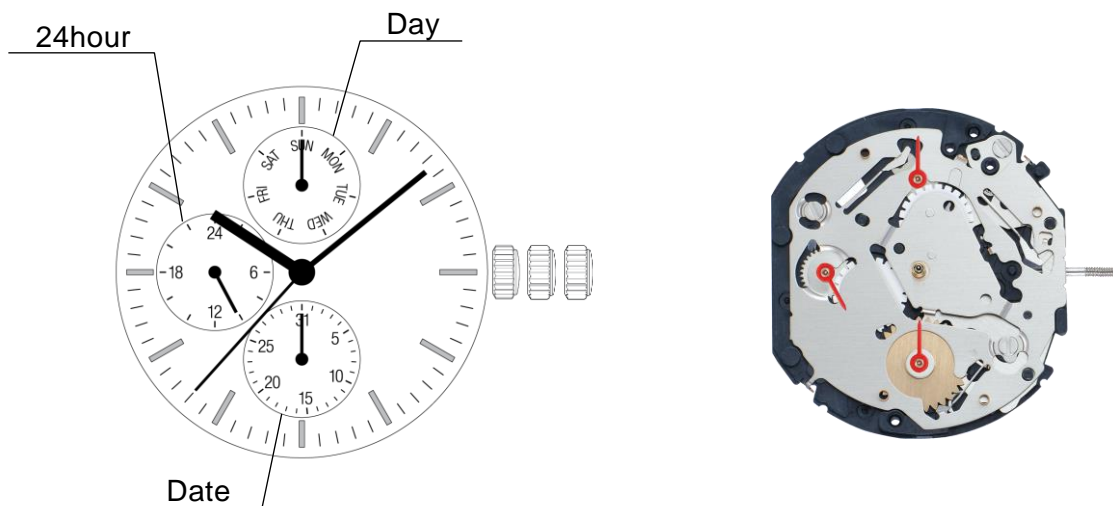


Watch Movement Parts List and Disassemble Guide

Cal.VX7NE

MULTI-FUNCTION

- Day / Date / 24hour



MOVEMENT SPECIFICATIONS

Movement Size 12 3/4'''

Height 3.99mm

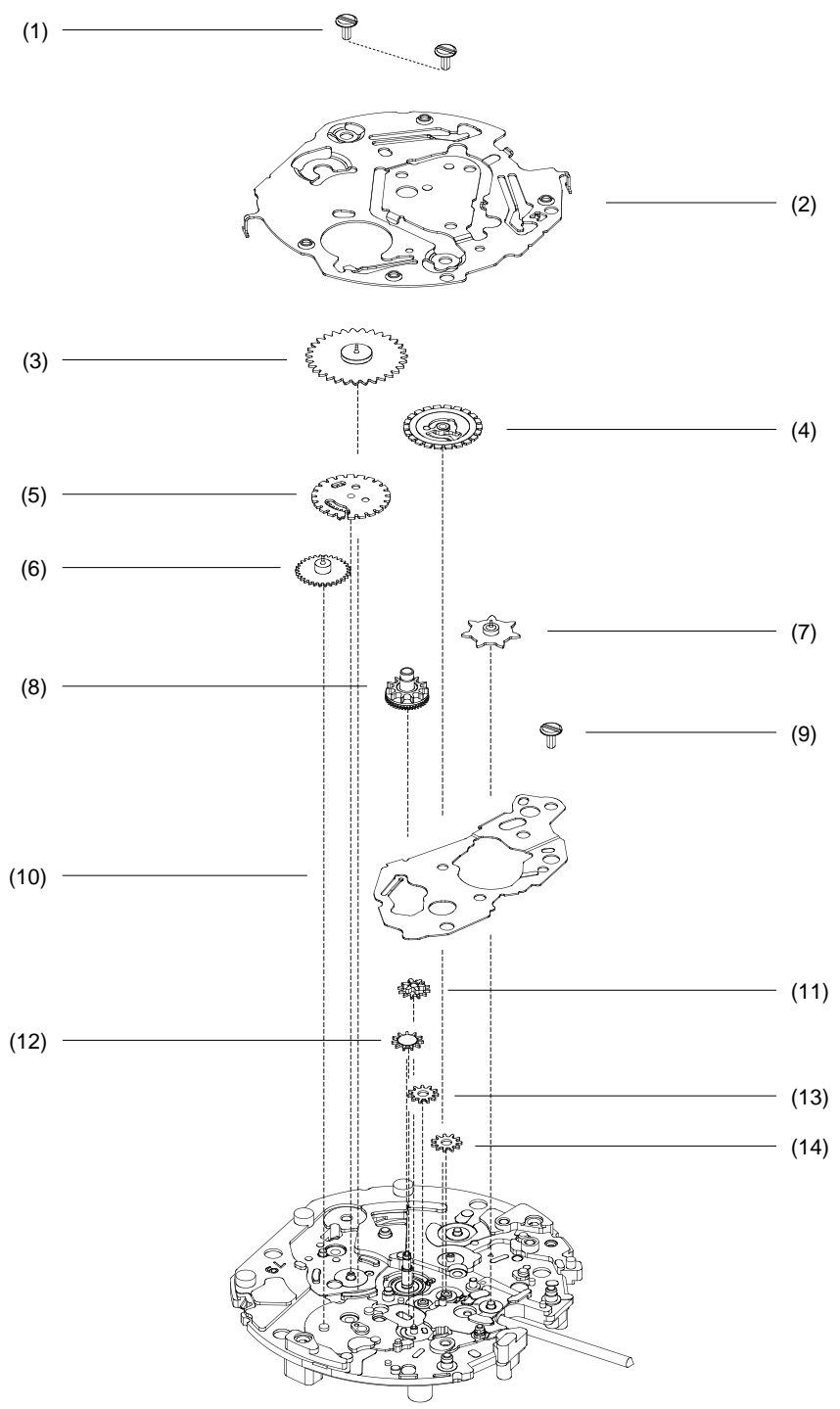
Casing Diameter Ø 28.6mm

Battery Life 3 years

Cal.VX7NE Parts List 零件一覽表

No.	PARTS NAME	CHINESE(简体字)	QTY	VX7NE1
(1)	Screw	螺丝	2	0022 222
(2)	Calendar cover	日历夹板	1	0839 511
(3)	Date star wheel	日历星轮	1	0970 503
(4)	Day indicator driving wheel	星期推动轮	1	0802 519
(5)	Date indicator driving wheel	日历推动轮	1	0802 518
(6)	24 hour wheel	24小时轮	1	1002 559
(7)	Day wheel	小星期轮	1	1002 546
(8)	Hour wheel	时轮	1	0271 658
(9)	Screw	螺丝	1	0022 222
(10)	Corrector lever cover	修正簧压片	1	0837 504
(11)	Date corrector wheel	日历修正轮	1	0737 532
(12)	Calendar corrector setting wheel	日历修正轮	1	0737 909
(13)	3rd calendar corrector setting transmission wheel	第三日历修正传动轮	1	0962 909
(14)	2nd calendar corrector setting transmission wheel	第二日历修正传动轮	1	0962 909
(15)	Battery	电池	1	3013 150
(16)	Screw	螺丝	2	0022 247
(17)	Battery connection (+)	正极片	1	4268 540
(18)	Circuit block	电路板	1	4000 760
(19)	Train wheel bridge	轮列夹板	1	0125 519
(20)	Fourth wheel	4号轮	1	0241 559
(21)	Third wheel	3号轮	1	0231 904
(22)	Fifth wheel	5号轮	1	0701 904
(23)	Rotor	转子	1	4146 890
(24)	Minute wheel	度数轮	1	0261 908
(25)	Train wheel setting lever	轮组止动竿	1	0391 890
(26)	Setting lever	鸡头	1	0383 891
(27)	Yoke	横担	1	0384 890
(28)	Setting wheel	拨针轮	1	0281 904
(29)	Setting stem (standard)	把芯 (标准)	1	0351 578
	Setting stem (short)	把芯 (短的)	1	0351 177
(30)	Clutch wheel	猪笼轮	1	0282 890
(31)	1st calendar corrector setting transmission wheel	第一日历修正传动轮	1	0962 890
(32)	Screw	螺丝	1	0022 247
(33)	Coil block	线圈	1	4002 556
(34)	Stator	定子	1	4239 554
(35)	Center wheel	中心轮	1	0221 602
(36)	Battery insulating plate C	电池绝缘片C	1	4216 904
(37)	Battery connection (-)	负极片	1	4270 904

VX7J,7N,7P,7R,7Y DISASSEMBLE CHART (1)



VX7J,7N,7P,7R,7Y DISASSEMBLE CHART (2)

