

Watch Movement Specification and Drawing

MINI & SLIM

Cal. VX10A

Movement Size

5 1/2'''

Casing Diameter

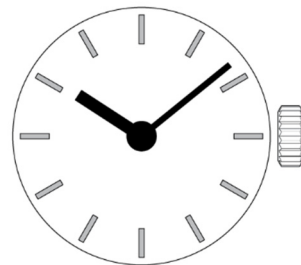
11.8 × 15.15 mm

Height

2.19mm

Battery Life

3 years



Date: 18/Sep./'20

Cal. VX10A

Items	Rev.	Page
Specifications	05	1
Appearance	07	2
Casing	06	3
Hand fitting	07	4
Hand setting stem	06	5
Dial	04	6
Casing ring	03	7

Analog Quartz 5 1/2" Slim Movement / Two Hands(H/M)

1. MOVEMENT DIMENSIONS

Outside diameter	13.00mm(3-9H) × 15.55mm(12-6H)
Casing diameter	11.80mm(3-9H) × 15.15mm(12-6H)
Total height	2.19mm (including battery)

2. TIME STANDARD

Type of quartz oscillator	Tuning fork
Frequency of quartz oscillator	32,768 Hz
Accuracy	±20 seconds per month (on wrist)
Operating temperature range	−5°C to +50°C
Regulation device	Nil (Pre-adjusted)

3. INDICATOR / FUNCTIONS

2 Hands	Hour / Minute
Reset switch	
Setting mechanism	Crown at normal position : Free Crown pulled out 1st click : Time setting / Reset

4. FEATURES

Jewels	0 Jewels
Anti-magnetism	Over 1600A/m (Direct current magnetic field)
Maximum unbalance of hands	Hour hand : 0.13 μ N·m
	Minute hand : 0.15 μ N·m

5. BATTERY

Type / Size	Silver oxide battery / φ5.8mm × t 1.65mm
Recommended battery	SR516SW (Maxell, Murata, Seizaiken)
Nominal voltage	1.55 V
Battery life	Approx. 3 years
Driving current consumption	Approx. 0.25 μ A
Operation stopping voltage	1.0 V

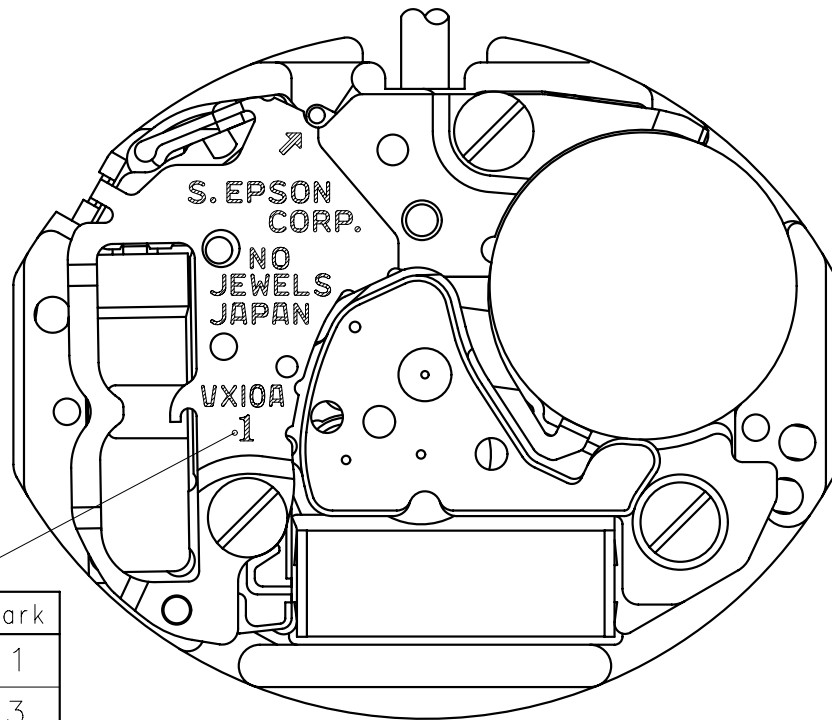
6. SEPARATED PARTS (Parts code)

Hour wheel	0271818(TypeS) or 0271634(TypeL)
Dial washer	0491735
Hand setting stem	0351819 or 0351818
Battery	SR516SW

7. TEST OF ACCURACY

Equipment to be used	SEIKO quartz tester QT-99, Greiner quartz timer-C , Witschi Q-tester 4000
Duration of measurement	10 seconds
Microphone to be used	Electromagnetic detection type

All specifications are subject to change without notice.

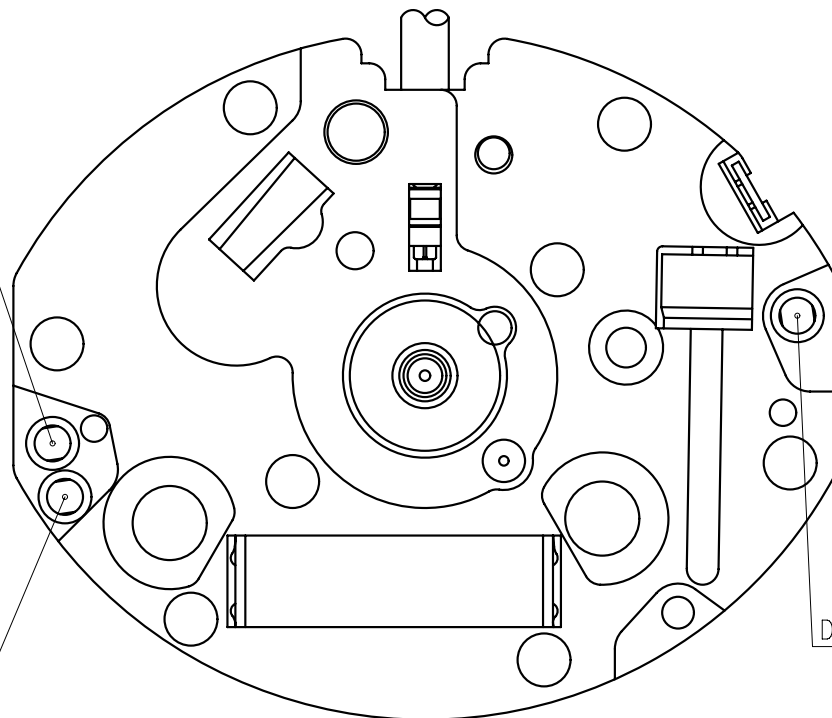


Hands type

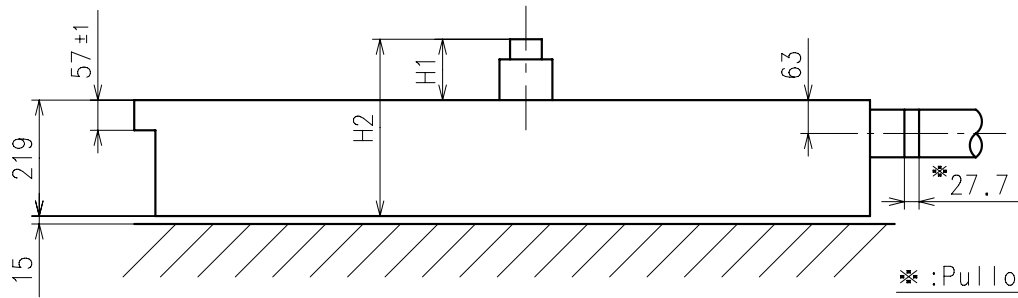
	Mark
Type S (1)	1
Type L (3)	3

Dial leg hole B
(Main hole)

(Dial leg hole C)
(Sub hole)

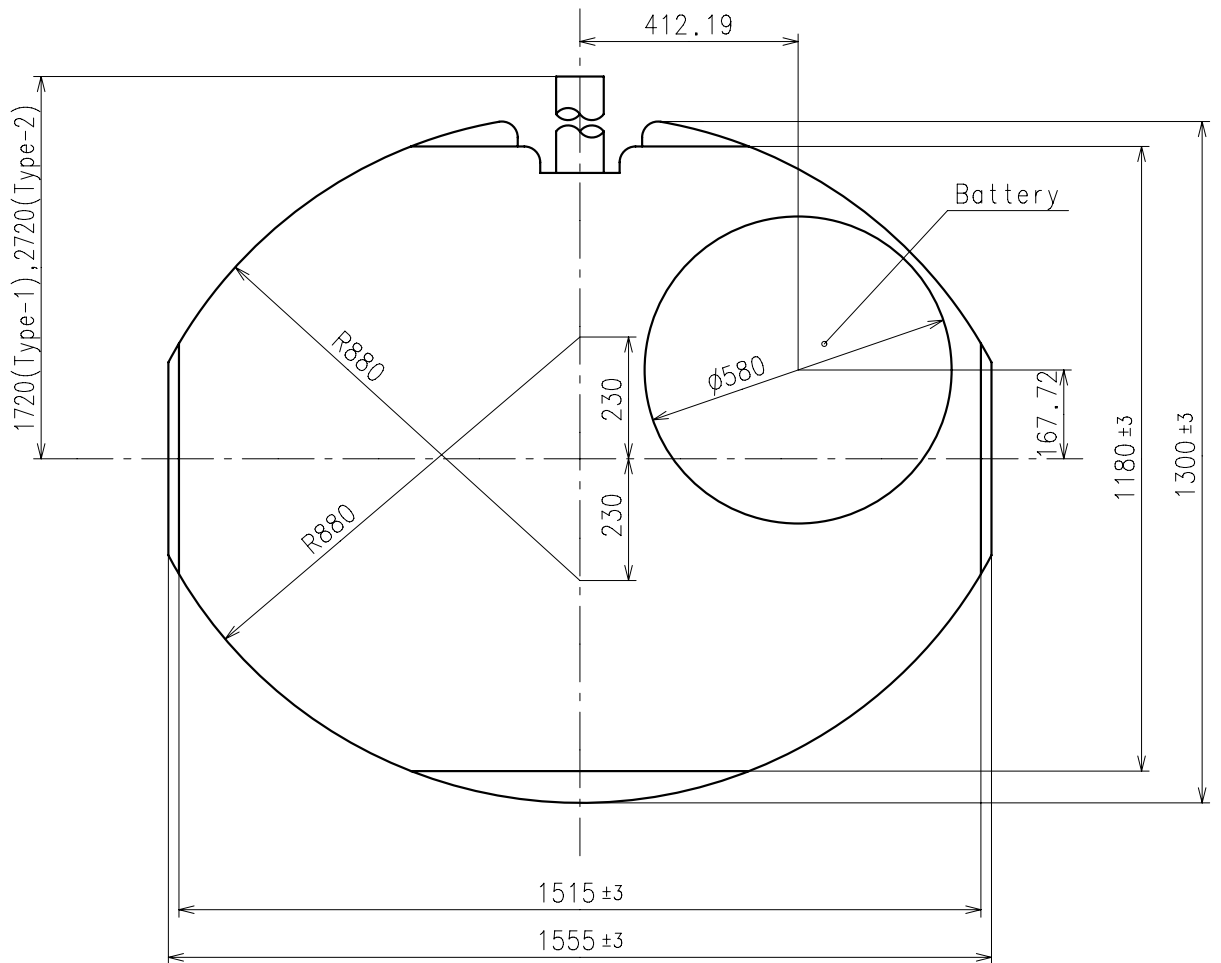


Dial leg hole A
(Main hole)

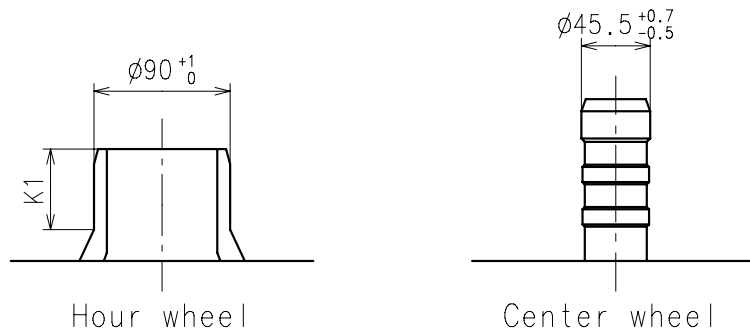


※:Pullout stroke

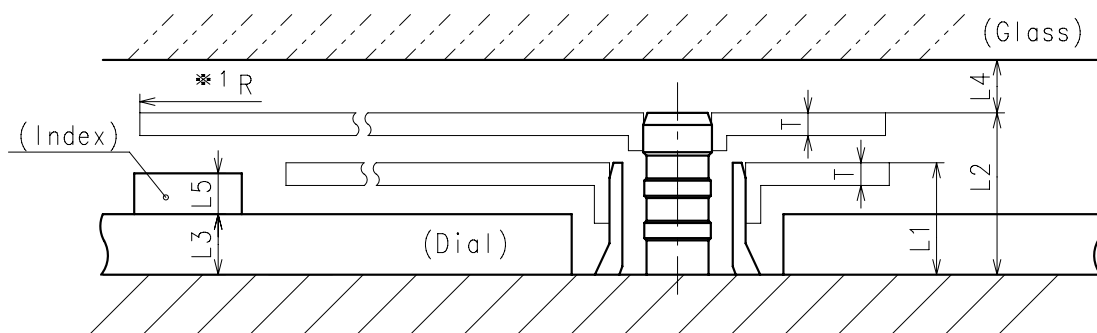
Center post		Type S (1) VX10A1	Type L (3) VX10A2
Maximum height from dial support	H1	112	160
Total height including movement	H2	331	379



- * Hour hand unbalance $\leq 0.13\mu \text{ N} \cdot \text{m}$ ($13\mu \text{ g} \cdot \text{m}$)
- * Minute hand unbalance $\leq 0.15\mu \text{ N} \cdot \text{m}$ ($15\mu \text{ g} \cdot \text{m}$)

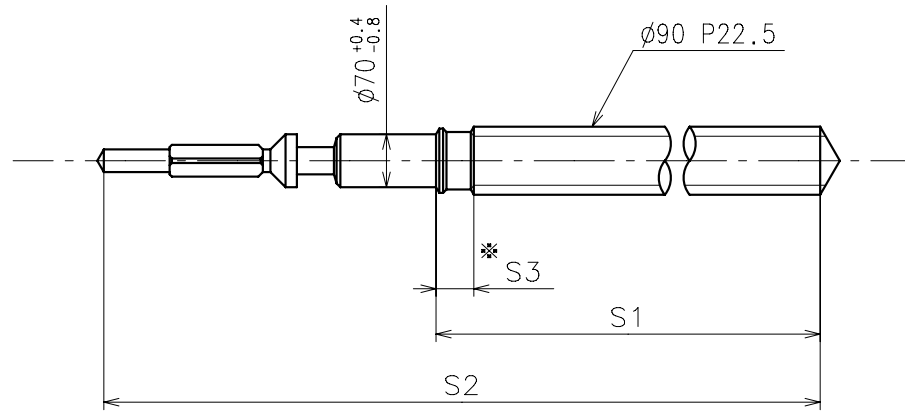


	Parts No.		Dimension
	Hour wheel	Center wheel	K1
Type S (1) VX10A1	0271818	0221814	53
Type L (3) VX10A2	0271634	0221597	49



	L1	L2	L3	L4	L5	T	*1 R
Type S (1) VX10A1	74	112	40	MIN: 35	MAX: 22	15	MAX: 750
Type L (3) VX10A2	122	160	90	MIN: 35	MAX: 22	15	MAX: 750

*1: It is the size taken into consideration for hands attachment.
Please observe some standard value specified in unbalance when using long hands.

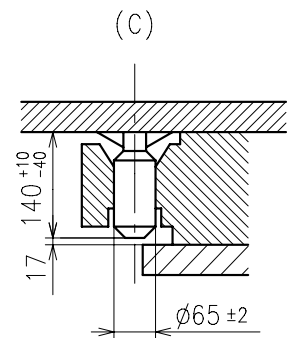
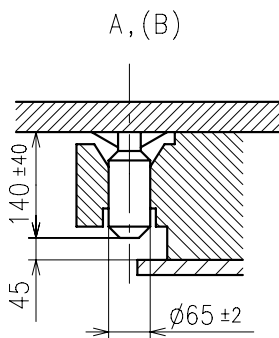
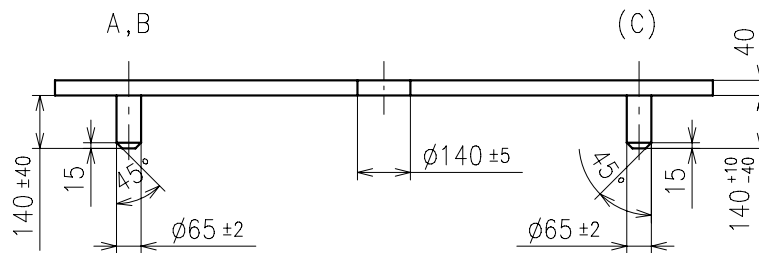
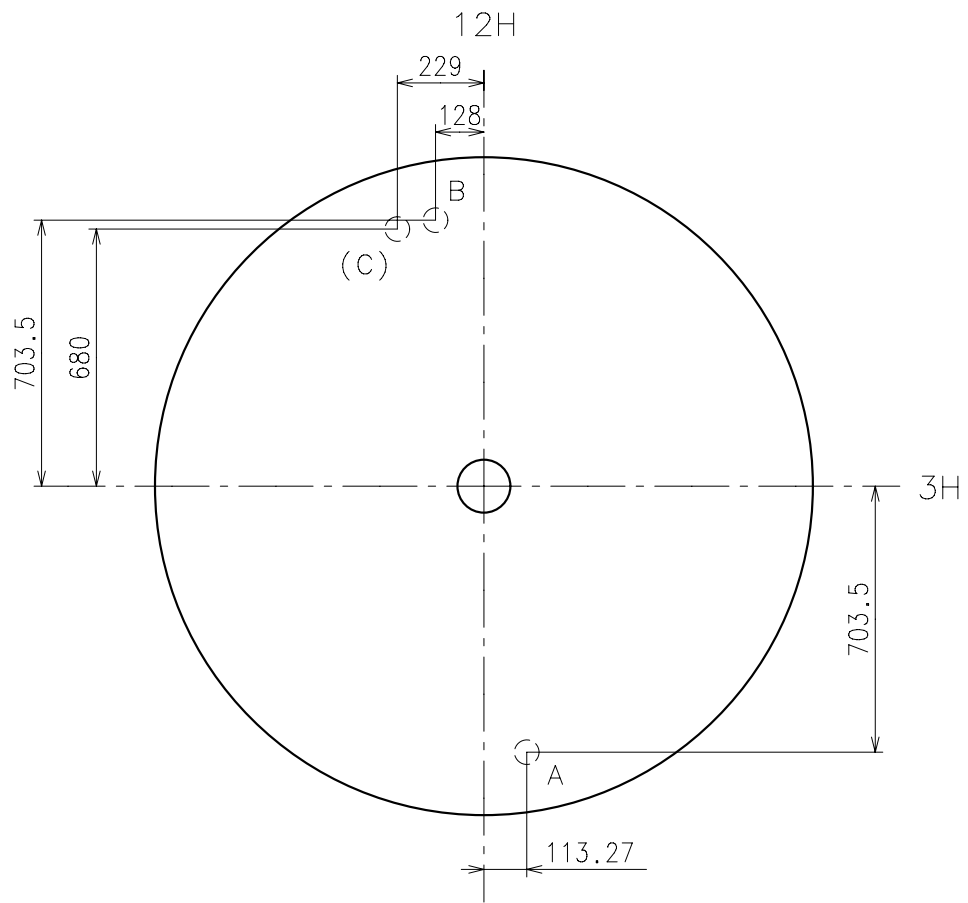


* Not threaded

	Part No.	S1	S2	S3
Type-1 (Standard)	0351819	1148	1577	50
Type-2	0351818	2148	2577	1050

Material : Steel

Hardness : Vickers 600±50



* Use dial leg A-B or (A-C)

