

Watch Movement Specification and Drawing

CALENDAR

Cal. VX3KE

Movement Size

10 1/2'''

Casing Diameter

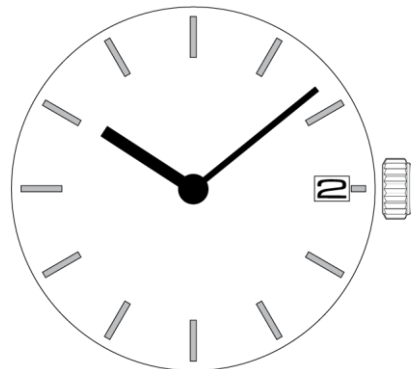
Ø 23.3mm

Height

2.62mm

Battery Life

3 years



Date: 18/Sep./'20

Cal. VX3KE

Items	Rev.	Page
Specifications	04	1
Appearance	04	2
Casing	04	3
Hand fitting	04	4
Hand setting stem	04	5
Dial-01	02	6-01
Dial-02	02	6-02
Casing ring	02	7

Analog Quartz 10 1/2" Slim Movement / Two hands(H/M) with Calendar

1. MOVEMENT DIMENSIONS

Outside diameter	ϕ 24.00mm × 21.30mm(3-9H) × 21.50mm(12-6H)
Casing diameter	ϕ 23.30mm × 21.30mm(3-9H) × 21.50mm(12-6H)
Total height	2.62mm (including battery)

2. TIME STANDARD

Type of quartz oscillator	Tuning fork
Frequency of quartz oscillator	32,768 Hz
Accuracy	±20 seconds per month (on wrist)
Operating temperature range	-5°C to +50°C
Regulation device	Nil (Pre-adjusted)

3. INDICATOR / FUNCTIONS

2 Hands	Hour / Minute
Calendar	Instant setting device for date calendar
Reset switch	
Setting mechanism	Crown at normal position : Free Crown pulled out 1st click : Instant date change Crown pulled out 2nd click : Time setting / Reset

4. FEATURES

Jewels	0 Jewels
Anti-magnetism	Over 1600A/m (Direct current magnetic field)
Maximum unbalance of hands	Hour hand : 0.5 μ N·m Minute hand : 0.6 μ N·m

5. BATTERY

Type / Size	Silver oxide battery / ϕ 9.5mm × t 2.0mm
Recommended battery	SR920SW (Maxell, Murata, Seizaiken)
Nominal voltage	1.55 V
Battery life	Approx. 3 years
Driving current consumption	Approx. 1.6 μ A
Operation stopping voltage	1.1 V

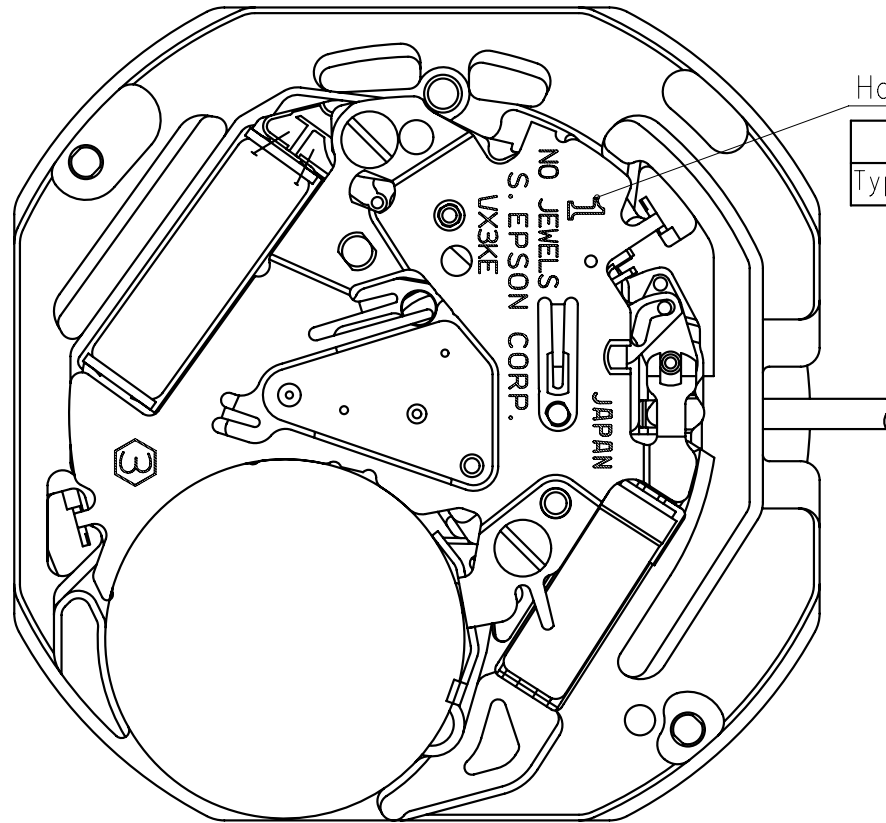
6. SEPARATED PARTS (Parts code)

Hand setting stem	0351177 or 0351578
Battery	SR920SW

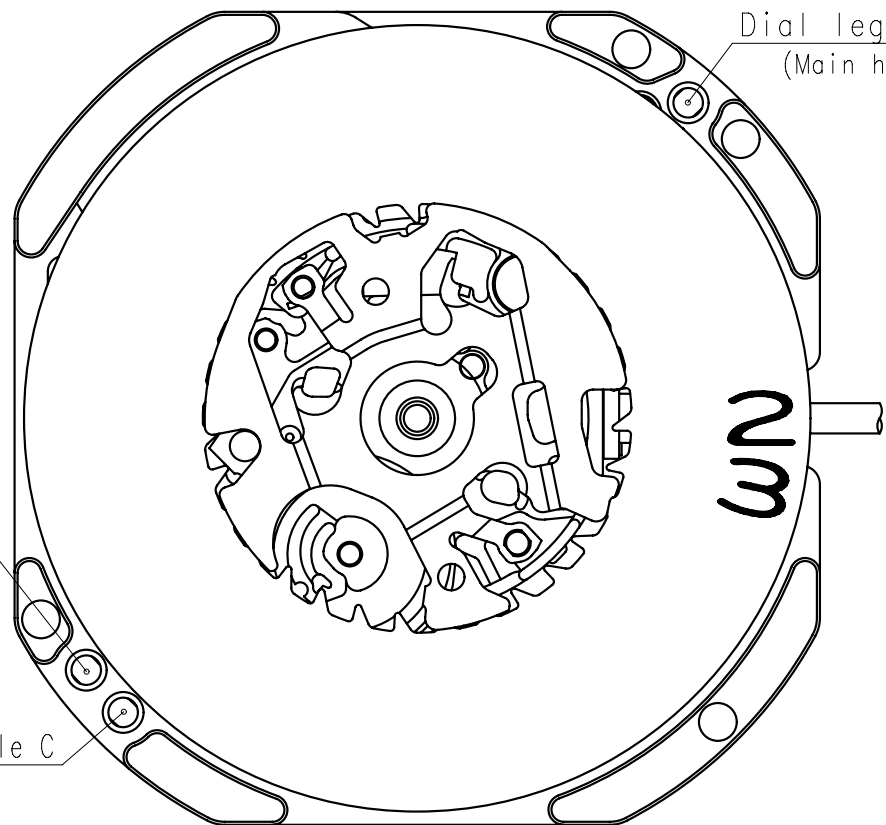
7. TEST OF ACCURACY

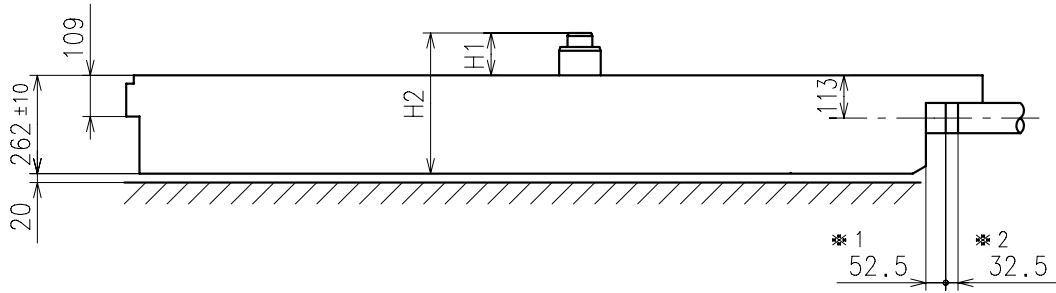
Equipment to be used	SEIKO quartz tester QT-99, Greiner quartz timer-C , Witschi Q-tester 4000
Duration of measurement	10 seconds
Microphone to be used	Electromagnetic detection type

All specifications are subject to change without notice.



	Mark
Type S (1)	1

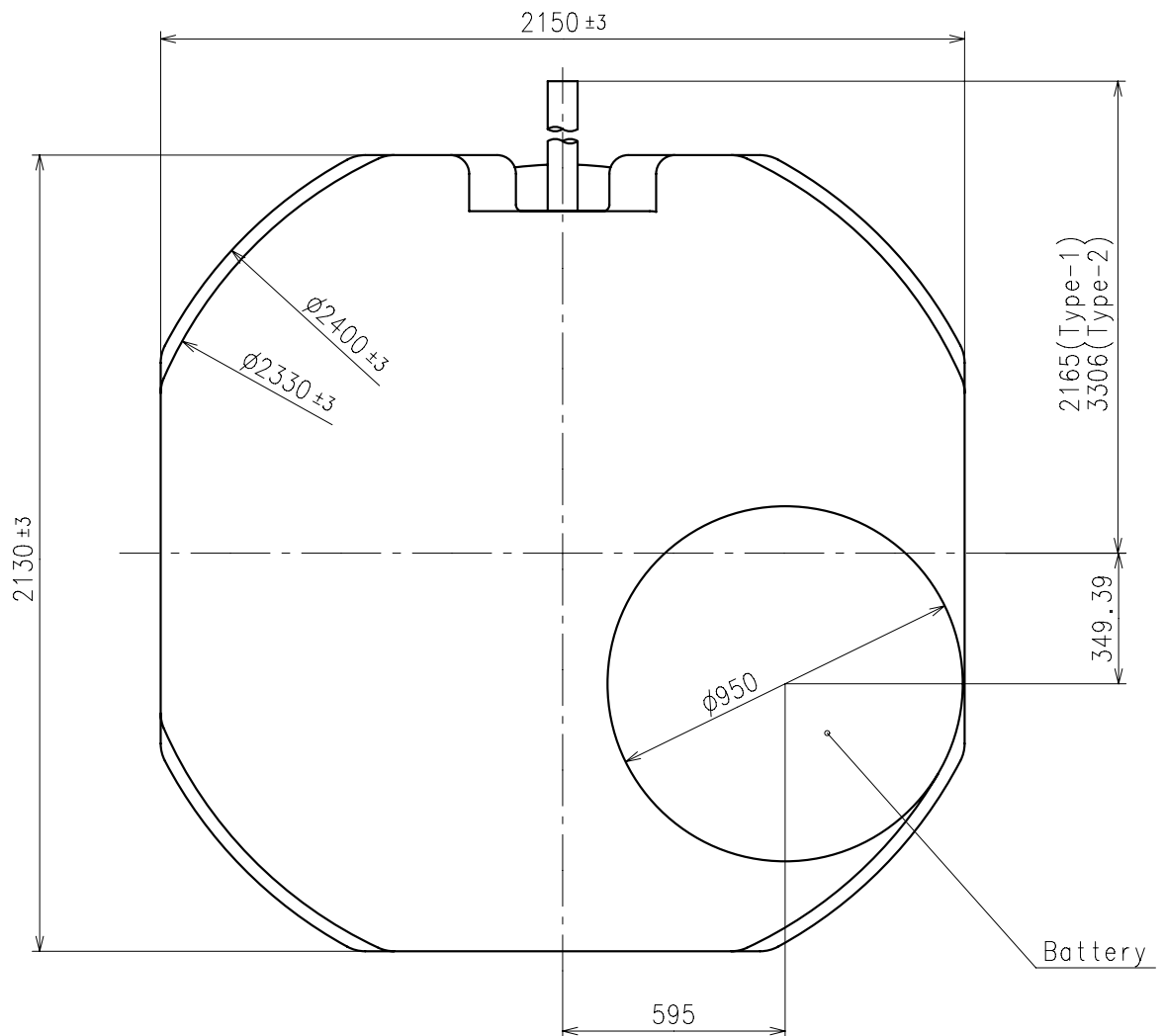




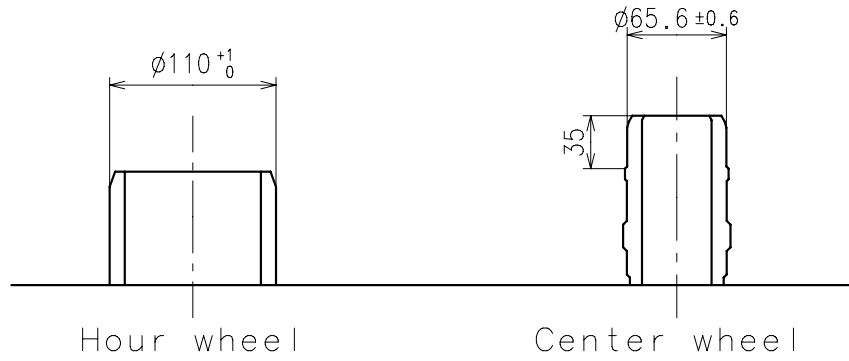
Center post		Type S (1) VX3KE1*
Maximum height from dial support	H1	112
Total height including movement	H2	374

$\ast 1$: First pullout stroke

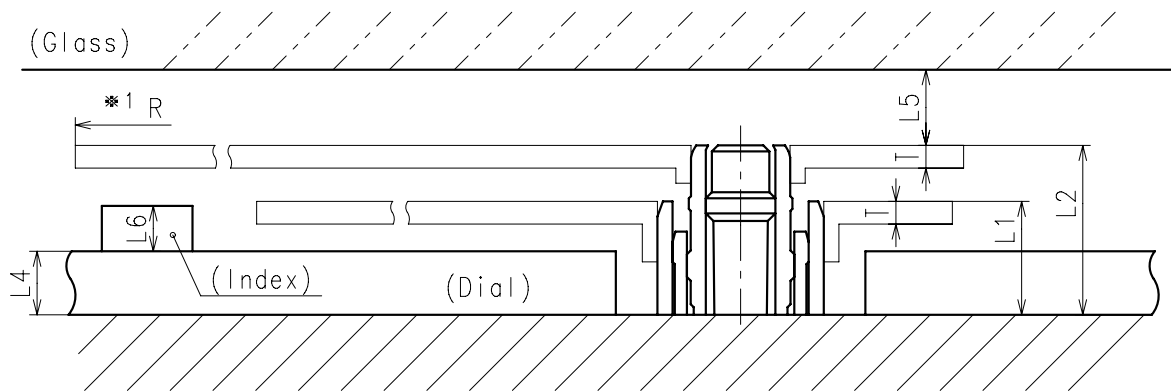
$\ast 2$: Second pullout stroke



- * Hour hand unbalance $\leq 0.5\mu \text{ N} \cdot \text{m} (50\mu \text{ g} \cdot \text{m})$
- * Minute hand unbalance $\leq 0.6\mu \text{ N} \cdot \text{m} (60\mu \text{ g} \cdot \text{m})$

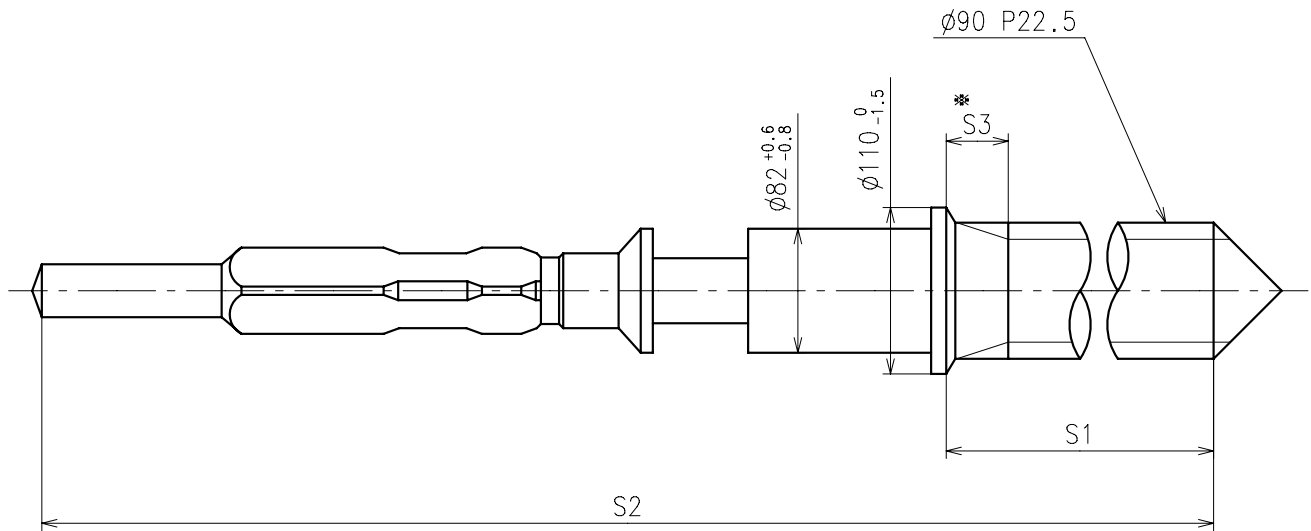


	Parts No.	
	Hour wheel	Center wheel
Type S (1) VX3KE1*	0271929	0221929



	L1	L2	L4	L5	L6	T	*1 R
Type S (1) VX3KE1*	75	112	40	MIN: 50	MAX: 30	15	MAX: 1250

*1: It is the size taken into consideration for hands attachment.
Please observe some standard value specified in unbalance when using long hands.

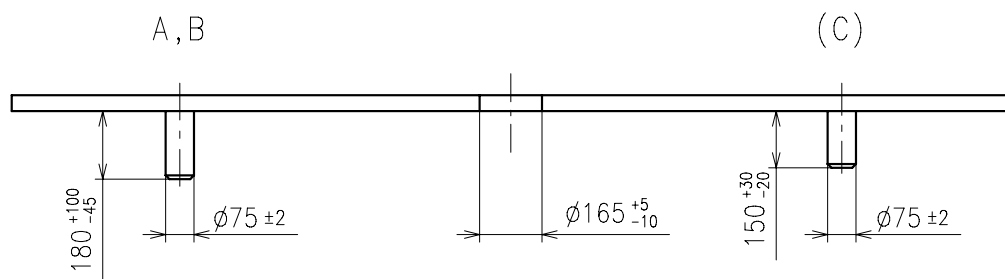
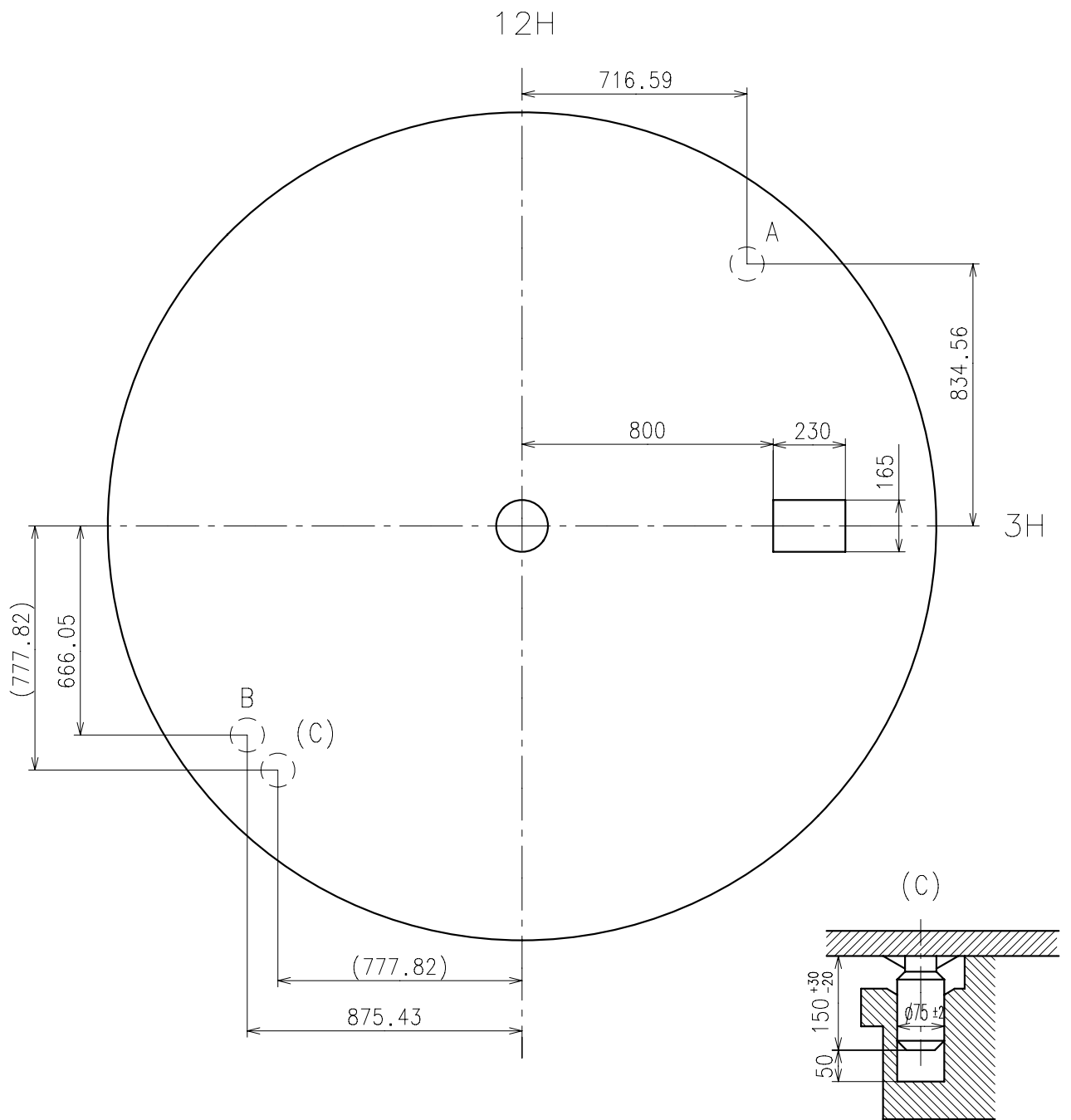


※ Not threaded

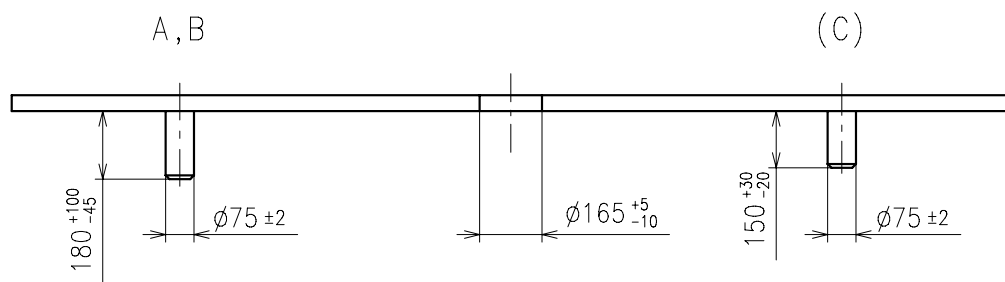
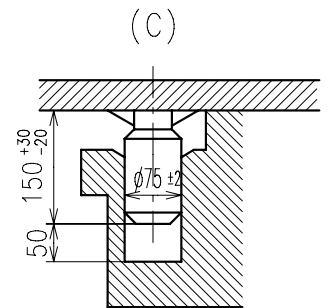
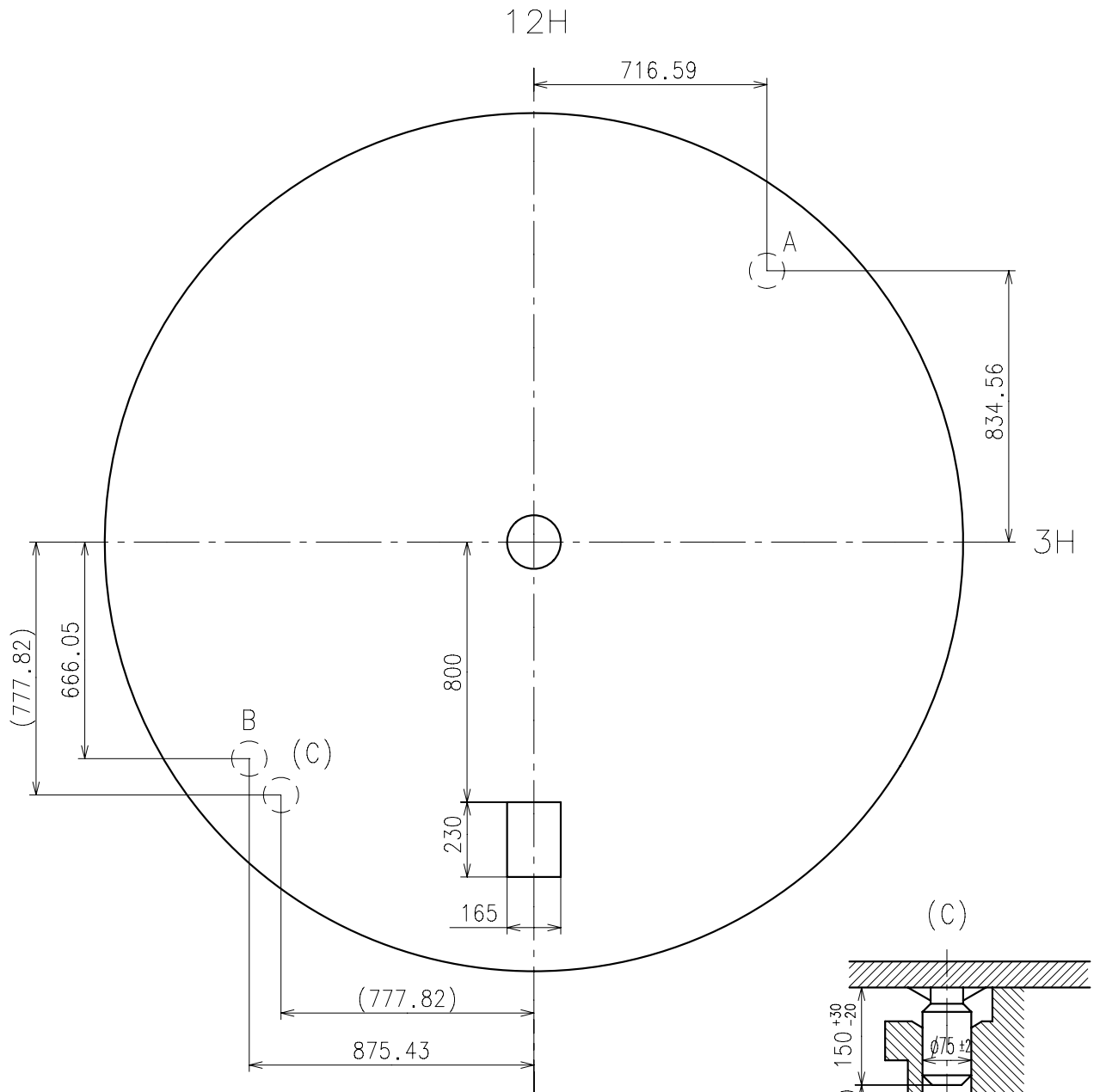
	Part No.	S1	S2	※ S3
Type-1 (Standard)	0351177	1366	1964	60
Type-2	0351578	2507	3105	650

Material : Steel

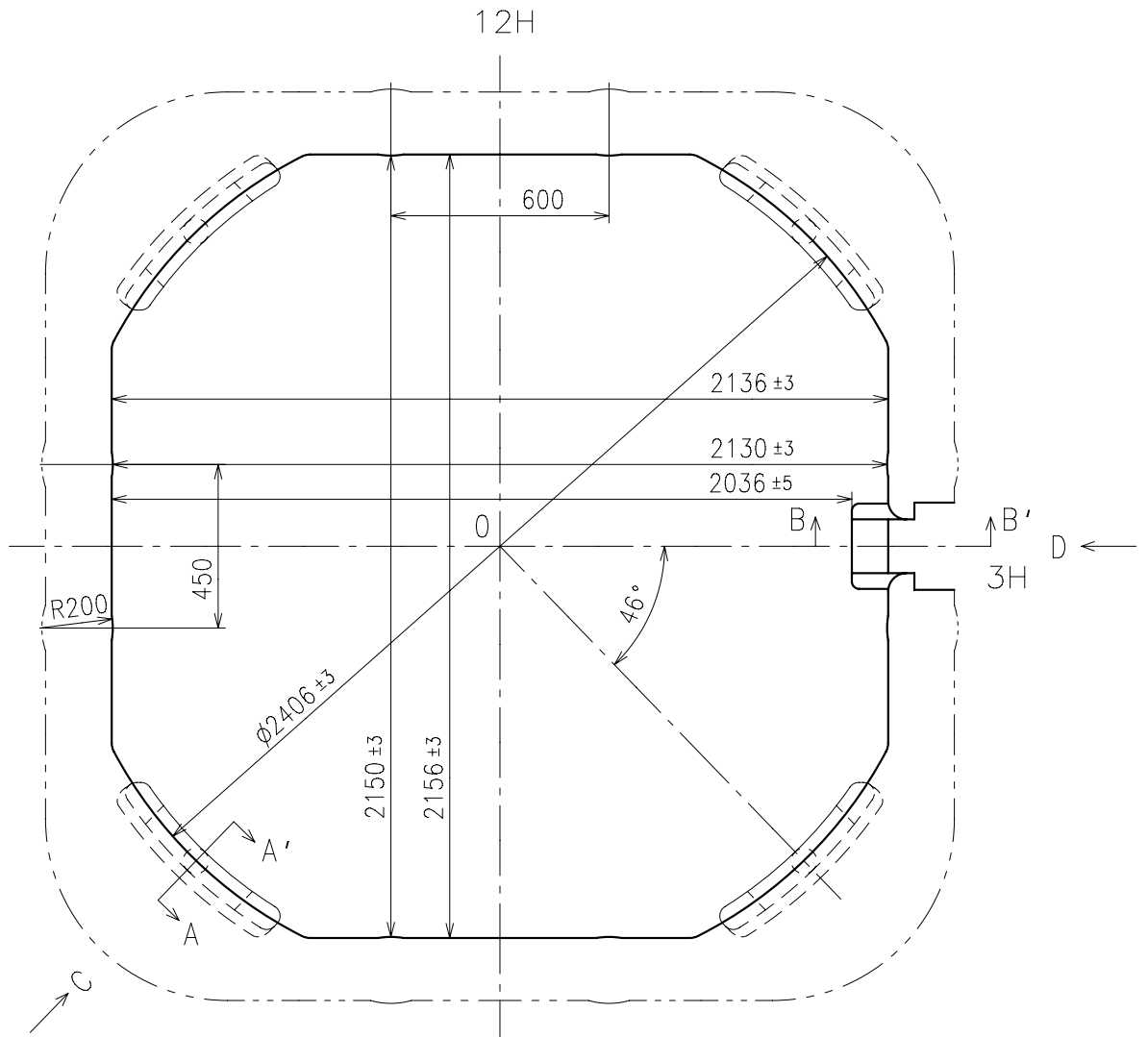
Hardness : Vickers 600±50



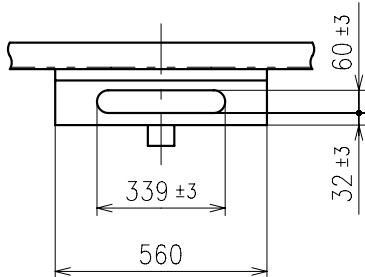
* Use dial leg A-B or (A-C)



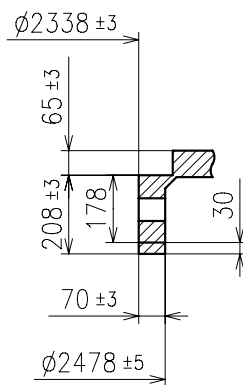
* Use dial leg A-B or (A-C)



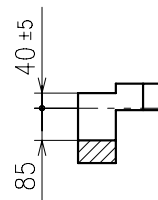
C view



A-A' section



B-B' section



D view

